



[Go to Product page](#)

Datasheet for ABIN7181492

anti-HIST1H2AG antibody (AA 86-98)

1 Image

Overview

Quantity:	100 µL
Target:	HIST1H2AG
Binding Specificity:	AA 86-98
Reactivity:	Human
Host:	Rabbit
Clonality:	Polyclonal
Conjugate:	This HIST1H2AG antibody is un-conjugated
Application:	ELISA, Immunohistochemistry (IHC)

Product Details

Immunogen:	Synthesized peptide derived from Human Histone H2A type 1 protein (86-98aa)
Isotype:	IgG
Cross-Reactivity:	Human
Purification:	Antigen Affinity Purified

Target Details

Target:	HIST1H2AG
Alternative Name:	HIST1H2AG (HIST1H2AG Products)
Background:	Background: Core component of nucleosome. Nucleosomes wrap and compact DNA into chromatin, limiting DNA accessibility to the cellular machineries which require DNA as a

Target Details

template. Histones thereby play a central role in transcription regulation, DNA repair, DNA replication and chromosomal stability. DNA accessibility is regulated via a complex set of post-translational modifications of histones, also called histone code, and nucleosome remodeling.

Aliases: Histone H2A type 1 (H2A.1) (Histone H2A/ptI), HIST1H2AG, HIST1H2AI, HIST1H2AK, HIST1H2AL, HIST1H2AM, H2AFP, H2AFC, H2AFD, H2AFI, H2AFN

UniProt: [P0C0S8](#)

Application Details

Application Notes: Recommended dilution: IHC:1:10-1:100,

Restrictions: For Research Use only

Handling

Format: Liquid

Buffer: Preservative: 0.03 % Proclin 300
Constituents: 50 % Glycerol, 0.01M PBS, pH 7.4

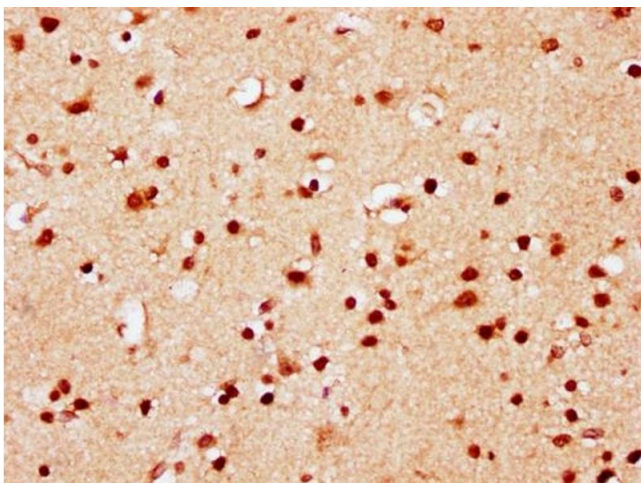
Preservative: ProClin

Precaution of Use: This product contains ProClin: a POISONOUS AND HAZARDOUS SUBSTANCE which should be handled by trained staff only.

Storage: -20 °C,-80 °C

Storage Comment: Upon receipt, store at -20°C or -80°C. Avoid repeated freeze.

Images



Immunohistochemistry

Image 1. IHC image of nsuchU diluted at 1:10 and staining in paraffin-embedded human brain tissue performed on a Leica Bond™ system. After dewaxing and hydration, antigen retrieval was mediated by high pressure in a citrate buffer (pH 6.0). Section was blocked with 10 % normal goat serum 30 min at RT. Then primary antibody (1 % BSA) was incubated at 4 °C overnight. The primary is detected by a biotinylated secondary antibody and visualized using an

HRP conjugated SP system.