

Datasheet for ABIN7181658
anti-IGFBP3 antibody



[Go to Product page](#)

2 Images

Overview

Quantity:	100 µg
Target:	IGFBP3
Reactivity:	Human
Host:	Rabbit
Clonality:	Polyclonal
Conjugate:	This IGFBP3 antibody is un-conjugated
Application:	Western Blotting (WB), Immunohistochemistry (IHC), ELISA

Product Details

Immunogen:	Synthesized peptide derived from Human IGFBP3 around the non-phosphorylation site of S183.
Isotype:	IgG
Cross-Reactivity:	Human, Mouse
Purification:	The antibody was affinity-purified from rabbit antiserum by affinity-chromatography using epitope-specific immunogen.

Target Details

Target:	IGFBP3
Alternative Name:	IGFBP3 (IGFBP3 Products)
Background:	Acid stable subunit of the 140 K IGF complex antibody, Binding protein 29 antibody, Binding protein 53 antibody, BP 53 antibody, BP53 antibody, Growth hormone dependent binding protein antibody, IBP 3 antibody, IBP-3 antibody, IBP3 antibody, IBP3_HUMAN antibody, IGF

Target Details

	binding protein 3 antibody, IGF-binding protein 3 antibody, IGFBP 3 antibody, IGFBP-3 antibody, IGFBP3 antibody, Insulin Like Growth Factor Binding Protein 3 antibody, Insulin-like growth factor binding protein 3 precursor antibody, Insulin-like growth factor-binding protein 3 antibody
UniProt:	P17936
Pathways:	Myometrial Relaxation and Contraction, Regulation of Muscle Cell Differentiation, Skeletal Muscle Fiber Development, Regulation of Carbohydrate Metabolic Process, Autophagy, Smooth Muscle Cell Migration, Growth Factor Binding

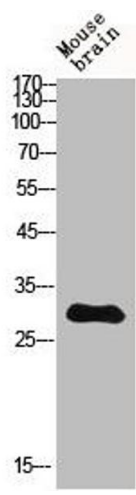
Application Details

Application Notes:	WB:1:500-1:2000, IHC:1:100-1:300, ELISA:1:20000,
Restrictions:	For Research Use only

Handling

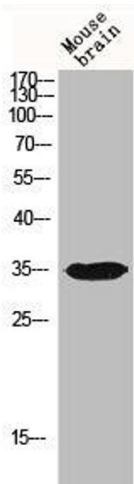
Format:	Liquid
Buffer:	Liquid in PBS containing 50 % glycerol, 0.5 % BSA and 0.02 % sodium azide.
Preservative:	Sodium azide
Precaution of Use:	This product contains Sodium azide: a POISONOUS AND HAZARDOUS SUBSTANCE which should be handled by trained staff only.
Storage:	-20 °C,-80 °C
Storage Comment:	Upon receipt, store at -20°C or -80°C. Avoid repeated freeze.

Images



Western Blotting

Image 1. Western Blot analysis of MOUSE-BRAIN cells using IGFBP3 Polyclonal Antibody



Western Blotting

Image 2. Western Blot analysis of MOUSE-BRAIN cells using IGFBP3 Polyclonal Antibody