



[Go to Product page](#)

Datasheet for ABIN7181802  
**anti-JunB antibody (pSer259)**

1 Image

### Overview

Quantity:	100 µg
Target:	JunB (JUNB)
Binding Specificity:	pSer259
Reactivity:	Human
Host:	Rabbit
Clonality:	Polyclonal
Conjugate:	This JunB antibody is un-conjugated
Application:	Western Blotting (WB), Immunohistochemistry (IHC), ELISA, Immunoprecipitation (IP)

### Product Details

Immunogen:	Synthesized peptide derived from Human Jun B around the phosphorylation site of S259.
Isotype:	IgG
Cross-Reactivity:	Human, Mouse, Rat
Purification:	The antibody was affinity-purified from rabbit antiserum by affinity-chromatography using epitope-specific immunogen.

### Target Details

Target:	JunB (JUNB)
Alternative Name:	JUNB ( <a href="#">JUNB Products</a> )
Background:	Activator protein 1 antibody, AP 1 antibody, AP1 antibody, Jun B antibody, Jun B proto

## Target Details

oncogene antibody, Jun B protooncogene antibody, Junb antibody, JunB proto oncogene antibody, JunB protoncogene 9 antibody, JunB protooncogene antibody, JUNB\_HUMAN antibody, Transcription factor jun B antibody, Transcription factor jun-B antibody, Transcription factor junB antibody

UniProt: [P17275](#)

## Application Details

Application Notes: WB:1:500-1:2000, IHC:1:100-1:300, IP:2-5 µg, ELISA:1:20000,

Restrictions: For Research Use only

## Handling

Format: Liquid

Buffer: Liquid in PBS containing 50 % glycerol, 0.5 % BSA and 0.02 % sodium azide.

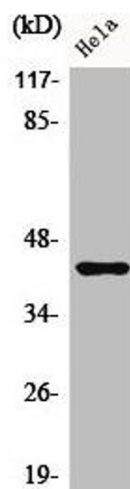
Preservative: Sodium azide

Precaution of Use: This product contains Sodium azide: a POISONOUS AND HAZARDOUS SUBSTANCE which should be handled by trained staff only.

Storage: -20 °C,-80 °C

Storage Comment: Upon receipt, store at -20°C or -80°C. Avoid repeated freeze.

## Images



### Western Blotting

**Image 1.** Western Blot analysis of HeLa cells using Phospho-Jun B (S259) Polyclonal Antibody