



Datasheet for ABIN7181830  
**anti-OPRK1 antibody (pSer369)**



[Go to Product page](#)

2 Images

Overview

Quantity:	100 µg
Target:	OPRK1
Binding Specificity:	pSer369
Reactivity:	Mouse
Host:	Rabbit
Clonality:	Polyclonal
Conjugate:	This OPRK1 antibody is un-conjugated
Application:	Western Blotting (WB), ELISA, Immunohistochemistry (IHC)

Product Details

Immunogen:	Synthesized peptide derived from Human KOR-1 around the phosphorylation site of S369.
Isotype:	IgG
Cross-Reactivity:	Mouse, Rat
Purification:	The antibody was affinity-purified from rabbit antiserum by affinity-chromatography using epitope-specific immunogen.

Target Details

Target:	OPRK1
Alternative Name:	OPRK1 ( <a href="#">OPRK1 Products</a> )
Background:	K-OR-1 antibody, Kappa opioid receptor antibody, Kappa type opioid receptor antibody, Kappa-

## Target Details

type opioid receptor antibody, KOR 1 antibody, KOR antibody, KOR-1 antibody, Opiate receptor kappa 1 antibody, Opiate receptor, kappa 1 antibody, Opioid receptor, kappa 1 antibody, OPRK 1 antibody, OPRK antibody, OPRK\_HUMAN antibody, OPRK1 antibody, Oprk2 antibody, R21 antibody

UniProt: [P41145](#)

## Application Details

Application Notes: WB:1:500-1:2000, IHC:1:100-1:300, ELISA:1:10000,

Restrictions: For Research Use only

## Handling

Format: Liquid

Buffer: Liquid in PBS containing 50 % glycerol, 0.5 % BSA and 0.02 % sodium azide.

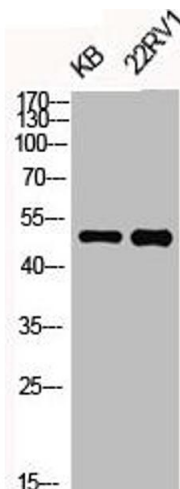
Preservative: Sodium azide

Precaution of Use: This product contains Sodium azide: a POISONOUS AND HAZARDOUS SUBSTANCE which should be handled by trained staff only.

Storage: -20 °C, -80 °C

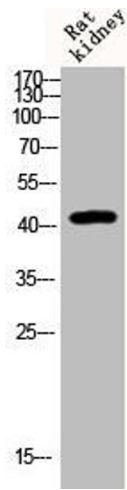
Storage Comment: Upon receipt, store at -20°C or -80°C. Avoid repeated freeze.

## Images



### Western Blotting

**Image 1.** Western Blot analysis of KB 22RV1 cells using Phospho-KOR-1 (S369) Polyclonal Antibody



### Western Blotting

**Image 2.** Western Blot analysis of Rat-kidney cells using Phospho-KOR-1 (S369) Polyclonal Antibody