

Datasheet for ABIN7181834
anti-KSR1 antibody (pSer392)[Go to Product page](#)

1 Image

Overview

Quantity:	100 µg
Target:	KSR1
Binding Specificity:	pSer392
Reactivity:	Human
Host:	Rabbit
Clonality:	Polyclonal
Conjugate:	This KSR1 antibody is un-conjugated
Application:	Western Blotting (WB), ELISA, Immunohistochemistry (IHC)

Product Details

Immunogen:	Synthesized peptide derived from Human Ksr-1 around the phosphorylation site of S392.
Isotype:	IgG
Cross-Reactivity:	Human, Mouse
Purification:	The antibody was affinity-purified from rabbit antiserum by affinity-chromatography using epitope-specific immunogen.

Target Details

Target:	KSR1
Alternative Name:	KSR1 (KSR1 Products)
Background:	BKSR 1 antibody, BKSR1 antibody, dKsr antibody, EK 31 antibody, EK31 antibody, hb antibody,

Target Details

Kinase suppressor of Ras 1 antibody, Kinase suppressor of ras antibody, KSR 1 antibody, KSR antibody, KSR1 antibody, KSR1_HUMAN antibody, Positive Ras signaling mediator family member (86.4 kD) antibody, Positive Ras signaling mediator family member antibody, RSU 2 antibody, RSU2 antibody, SR 31 antibody, SR31 antibody, Suppressor of activated let 60 Ras SUR3 antibody, Suppressor of Ras1 31 antibody

UniProt: [Q8IVT5](#)

Application Details

Application Notes: WB:1:500-1:2000, IHC:1:100-1:300, ELISA:1:20000,

Restrictions: For Research Use only

Handling

Format: Liquid

Buffer: Liquid in PBS containing 50 % glycerol, 0.5 % BSA and 0.02 % sodium azide.

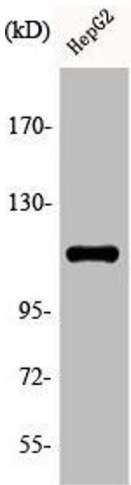
Preservative: Sodium azide

Precaution of Use: This product contains Sodium azide: a POISONOUS AND HAZARDOUS SUBSTANCE which should be handled by trained staff only.

Storage: -20 °C,-80 °C

Storage Comment: Upon receipt, store at -20°C or -80°C. Avoid repeated freeze.

Images



Western Blotting

Image 1. Western Blot analysis of HepG2 cells using Phospho-Ksr-1 (S392) Polyclonal Antibody