

Datasheet for ABIN7181845

**anti-KCNA3 antibody****1** Image[Go to Product page](#)

## Overview

Quantity:	100 µg
Target:	KCNA3
Reactivity:	Human
Host:	Rabbit
Clonality:	Polyclonal
Conjugate:	This KCNA3 antibody is un-conjugated
Application:	Western Blotting (WB), ELISA, Immunohistochemistry (IHC), Immunofluorescence (IF)

## Product Details

Immunogen:	Synthesized peptide derived from Human Kv1.3 around the non-phosphorylation site of Y187.
Isotype:	IgG
Cross-Reactivity:	Human, Mouse, Rat
Purification:	The antibody was affinity-purified from rabbit antiserum by affinity-chromatography using epitope-specific immunogen.

## Target Details

Target:	KCNA3
Alternative Name:	KCNA3 ( <a href="#">KCNA3 Products</a> )
Background:	HGK 5 antibody, HGK5 antibody, HLK 3 antibody, HLK3 antibody, HPCN 3 antibody, HPCN3 antibody, HuKIII antibody, KCNA 3 antibody, Kcna3 antibody, KCNA3_HUMAN antibody, KV1.3 antibody, MK 3 antibody, MK3 antibody, OTTHUMP00000032397 antibody, PCN 3 antibody,

## Target Details

PCN3 antibody, Potassium channel 3 antibody, Potassium voltage gated channel shaker related subfamily member 3 antibody, Potassium voltage gated channel subfamily A member 3 antibody, Potassium voltage-gated channel subfamily A member 3 antibody, Type n potassium channel antibody, Voltage gated potassium channel protein Kv1.3 antibody, Voltage gated potassium channel subunit Kv1.3 antibody, Voltage-gated K(+) channel HuKIII antibody, Voltage-gated potassium channel subunit Kv1.3 antibody

UniProt: [P22001](#)

## Application Details

Application Notes: WB:1:500-1:2000, IHC:1:100-1:300, IF:1:200-1:1000, ELISA:1:20000,

Restrictions: For Research Use only

## Handling

Format: Liquid

Buffer: Liquid in PBS containing 50 % glycerol, 0.5 % BSA and 0.02 % sodium azide.

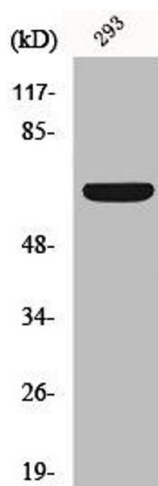
Preservative: Sodium azide

Precaution of Use: This product contains Sodium azide: a POISONOUS AND HAZARDOUS SUBSTANCE which should be handled by trained staff only.

Storage: -20 °C,-80 °C

Storage Comment: Upon receipt, store at -20°C or -80°C. Avoid repeated freeze.

## Images



### Western Blotting

**Image 1.** Western Blot analysis of 293 cells using Kv1.3 Polyclonal Antibody