

Datasheet for ABIN7181928

anti-MCM5 antibody

4 Images

[Go to Product page](#)

Overview

Quantity:	100 µL
Target:	MCM5
Reactivity:	Human
Host:	Rabbit
Clonality:	Polyclonal
Conjugate:	This MCM5 antibody is un-conjugated
Application:	Western Blotting (WB), Immunohistochemistry (IHC), Immunofluorescence (IF), ELISA

Product Details

Immunogen:	Synthesized peptide derived from Human MCM5 antibody.
Isotype:	IgG
Cross-Reactivity:	Human, Mouse, Rat
Purification:	The antibody was affinity-purified from rabbit antiserum by affinity-chromatography using epitope-specific immunogen.

Target Details

Target:	MCM5
Alternative Name:	MCM5 (MCM5 Products)
Background:	Background: Acts as component of the MCM2-7 complex (MCM complex) which is the putative replicative helicase essential for 'once per cell cycle' DNA replication initiation and elongation in eukaryotic cells. The active ATPase sites in the MCM2-7 ring are formed through the interaction

Target Details

surfaces of two neighboring subunits such that a critical structure of a conserved arginine finger motif is provided in trans relative to the ATP-binding site of the Walker A box of the adjacent subunit. The six ATPase active sites, however, are likely to contribute differentially to the complex helicase activity By similarity. Interacts with MCMBP.

Robert A. Scalfani, Genetics, May 2002, 161: 47.

Marylynn Snyder, PNAS, Oct 2005, 102: 14539 - 14544.

Christopher J. DaFonseca, PNAS, Mar 2001, 98: 3034.

Cathleen M. Lake, Genetics, Jun 2007, 10.1534

Aliases: CDC 46 antibody, CDC46 antibody, CDC46 homolog antibody, Cell division cycle 46 antibody, DNA replication licensing factor antibody, DNA replication licensing factor MCM 5 antibody, DNA replication licensing factor MCM5 antibody, MCM 5 antibody, MCM5 antibody, MCM5_HUMAN antibody, MGC5315 antibody, Minichromosome maintenance complex component 5 antibody, Minichromosome maintenance deficient (S. cerevisiae) 5 antibody, Minichromosome maintenance deficient 5 antibody, Minichromosome maintenance deficient protein 5 antibody, P1 CDC46 antibody, P1-CDC46 antibody

UniProt: [P33992](#)

Pathways: [DNA Damage Repair](#), [Mitotic G1-G1/S Phases](#), [DNA Replication](#), [Chromatin Binding](#), [Synthesis of DNA](#)

Application Details

Application Notes: WB:1:500-1:3000, IHC:1:50-1:100, IF:1:100-1:500,

Restrictions: For Research Use only

Handling

Format: Liquid

Buffer: Rabbit IgG in phosphate buffered saline (without Mg²⁺ and Ca²⁺), pH 7.4, 150 mM NaCl, 0.02 % sodium azide and 50 % glycerol.

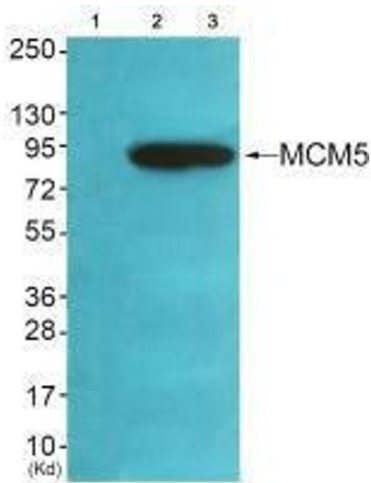
Preservative: Sodium azide

Precaution of Use: This product contains Sodium azide: a POISONOUS AND HAZARDOUS SUBSTANCE which should be handled by trained staff only.

Handling

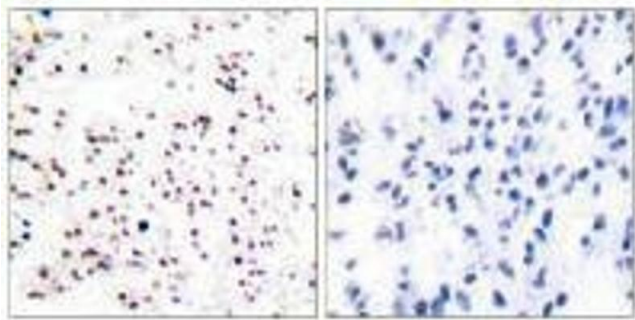
Storage:	-20 °C,-80 °C
Storage Comment:	Upon receipt, store at -20°C or -80°C. Avoid repeated freeze.

Images



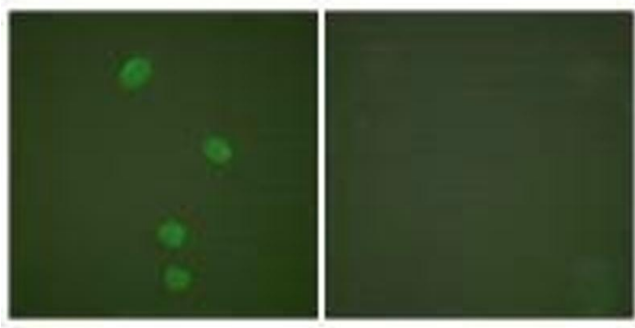
Western Blotting

Image 1. Western blot analysis of extracts from HeLa cells (Lane 2), A549 cells (Lane 3) and cells (Lane 4), using MCM5 antibody. The lane on the left is treated with synthesized peptide.



Immunohistochemistry

Image 2. Immunohistochemical analysis of paraffin-embedded human tonsil tissue using MCM5 antibody.



Immunofluorescence

Image 3. Immunofluorescence analysis of HepG2 cells, using MCM5 antibody.

Please check the [product details page](#) for more images. Overall 4 images are available for ABIN7181928.