

Datasheet for ABIN7181961
anti-MEK2 antibody (pThr394)



[Go to Product page](#)

2 Images

Overview

Quantity:	100 µg
Target:	MEK2 (MAP2K2)
Binding Specificity:	pThr394
Reactivity:	Human
Host:	Rabbit
Clonality:	Polyclonal
Conjugate:	This MEK2 antibody is un-conjugated
Application:	Western Blotting (WB), Immunohistochemistry (IHC), ELISA, Immunoprecipitation (IP)

Product Details

Immunogen:	Synthesized peptide derived from Human MEK-2 around the phosphorylation site of T394.
Isotype:	IgG
Cross-Reactivity:	Human, Mouse, Rat
Purification:	The antibody was affinity-purified from rabbit antiserum by affinity-chromatography using epitope-specific immunogen.

Target Details

Target:	MEK2 (MAP2K2)
Alternative Name:	MAP2K2 (MAP2K2 Products)
Background:	Cardiofaciocutaneous syndrome antibody, CFC syndrome antibody, CFC4 antibody, Dual

Target Details

specificity mitogen activated protein kinase kinase 2 antibody, Dual specificity mitogen-activated protein kinase kinase 2 antibody, ERK activator kinase 2 antibody, FLJ26075 antibody, MAP kinase kinase 2 antibody, map2k2 antibody, MAPK / ERK kinase 2 antibody, MAPK/ERK kinase 2 antibody, MAPKK 2 antibody, MAPKK2 antibody, MEK 2 antibody, MEK2 antibody, Microtubule associated protein kinase kinase 2 antibody, Mitogen activated protein kinase kinase 2 antibody, Mitogen activated protein kinase kinase 2 p45 antibody, MKK 2 antibody, MKK2 antibody, MP2K2_HUMAN antibody, OTTHUMP00000165826 antibody, OTTHUMP00000165827 antibody, PRKMK 2 antibody, PRKMK2 antibody

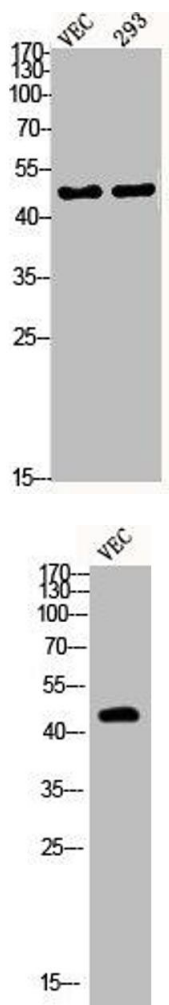
UniProt:	P36507
Pathways:	MAPK Signaling , RTK Signaling , Fc-epsilon Receptor Signaling Pathway , Neurotrophin Signaling Pathway , Activation of Innate immune Response , Toll-Like Receptors Cascades , Signaling of Hepatocyte Growth Factor Receptor , BCR Signaling

Application Details

Application Notes:	WB:1:500-1:2000, IHC:1:100-1:300, IP:2-5 µg, ELISA:1:10000,
Restrictions:	For Research Use only

Handling

Format:	Liquid
Buffer:	Liquid in PBS containing 50 % glycerol, 0.5 % BSA and 0.02 % sodium azide.
Preservative:	Sodium azide
Precaution of Use:	This product contains Sodium azide: a POISONOUS AND HAZARDOUS SUBSTANCE which should be handled by trained staff only.
Storage:	-20 °C,-80 °C
Storage Comment:	Upon receipt, store at -20°C or -80°C. Avoid repeated freeze.



Western Blotting

Image 1. Western Blot analysis of VEC 293 cells using Phospho-MEK-2 (T394) Polyclonal Antibody

Western Blotting

Image 2. Western Blot analysis of VEC cells using Phospho-MEK-2 (T394) Polyclonal Antibody