



[Go to Product page](#)

Datasheet for ABIN7181992  
**anti-MKP-1/2 antibody**

4 Images

### Overview

Quantity:	100 µg
Target:	MKP-1/2 (DUSP1/4)
Reactivity:	Human
Host:	Rabbit
Clonality:	Polyclonal
Conjugate:	This MKP-1/2 antibody is un-conjugated
Application:	Western Blotting (WB), Immunohistochemistry (IHC), ELISA

### Product Details

Immunogen:	Synthesized peptide derived from Human MKP-1/2 around the non-phosphorylation site of S296/318.
Isotype:	IgG
Cross-Reactivity:	Human, Mouse, Rat
Purification:	The antibody was affinity-purified from rabbit antiserum by affinity-chromatography using epitope-specific immunogen.

### Target Details

Target:	MKP-1/2 (DUSP1/4)
Alternative Name:	DUSP1/DUSP4 ( <a href="#">DUSP1/4 Products</a> )
Background:	DUSP1, CL100, MKP1, PTPN10, VH1, Dual specificity protein phosphatase 1, Dual specificity protein phosphatase hVH1, Mitogen-activated protein kinase phosphatase 1, MAP kinase

## Target Details

phosphatase 1, MKP-1, Protein-tyrosine phosphatase CL100, DUSP4,

UniProt: [P28562, Q13115](#)

## Application Details

Application Notes: WB:1:500-1:2000, IHC:1:100-1:300, ELISA:1:20000,

Restrictions: For Research Use only

## Handling

Format: Liquid

Buffer: Liquid in PBS containing 50 % glycerol, 0.5 % BSA and 0.02 % sodium azide.

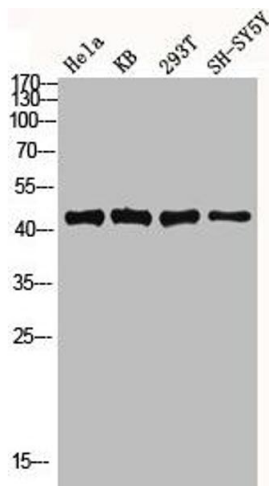
Preservative: Sodium azide

Precaution of Use: This product contains Sodium azide: a POISONOUS AND HAZARDOUS SUBSTANCE which should be handled by trained staff only.

Storage: -20 °C, -80 °C

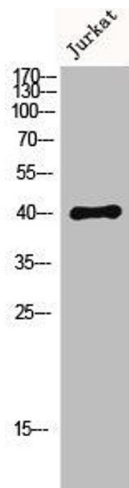
Storage Comment: Upon receipt, store at -20°C or -80°C. Avoid repeated freeze.

## Images



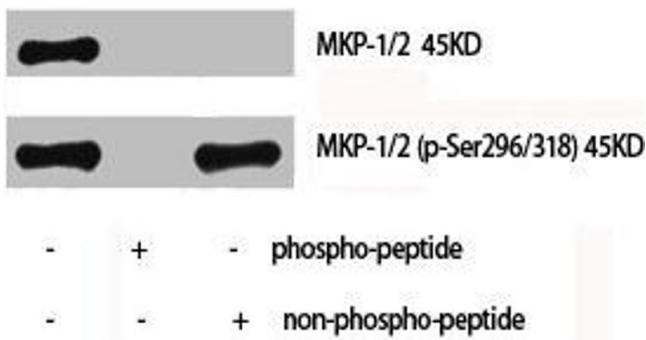
### Western Blotting

**Image 1.** Western blot analysis of HeLa KB 293T SH-SY5Y lysis using MKP-1/2 antibody.



### Western Blotting

**Image 2.** Western Blot analysis of Jurkat cells using MKP-1/2 Polyclonal Antibody



### Western Blotting

**Image 3.** Western Blot analysis of HeLa cells using MKP-1/2 Polyclonal Antibody

Please check the [product details page](#) for more images. Overall 4 images are available for ABIN7181992.