

Datasheet for ABIN7182058
anti-PPP1R12A antibody (pThr853)[Go to Product page](#)

2 Images

Overview

Quantity:	100 µg
Target:	PPP1R12A
Binding Specificity:	pThr853
Reactivity:	Human
Host:	Rabbit
Clonality:	Polyclonal
Application:	Western Blotting (WB), Immunohistochemistry (IHC), ELISA

Product Details

Immunogen:	Synthesized peptide derived from Human MYPT1 around the phosphorylation site of T853.
Isotype:	IgG
Cross-Reactivity:	Human, Mouse, Rat
Purification:	The antibody was affinity-purified from rabbit antiserum by affinity-chromatography using epitope-specific immunogen.

Target Details

Target:	PPP1R12A
Alternative Name:	PPP1R12A (PPP1R12A Products)
Background:	M130 antibody, MBS antibody, Myosin binding subunit antibody, Myosin phosphatase target subunit 1 antibody, Myosin phosphatase targeting subunit 1 antibody, Myosin phosphatase-targeting subunit 1 antibody, MYPT1 antibody, MYPT1_HUMAN antibody, PPP1R12A antibody,

Target Details

Protein phosphatase 1 regulatory inhibitor subunit 12A antibody, Protein phosphatase 1 regulatory subunit 12A antibody, Protein phosphatase 1, regulatory (inhibitor) subunit 12A antibody, Protein phosphatase myosin binding subunit antibody, Protein phosphatase myosin-binding subunit antibody

UniProt: [O14974](#)

Pathways: [M Phase](#)

Application Details

Application Notes: WB:1:500-1:2000, IHC:1:100-1:300, ELISA:1:5000,

Restrictions: For Research Use only

Handling

Format: Liquid

Buffer: Liquid in PBS containing 50 % glycerol, 0.5 % BSA and 0.02 % sodium azide.

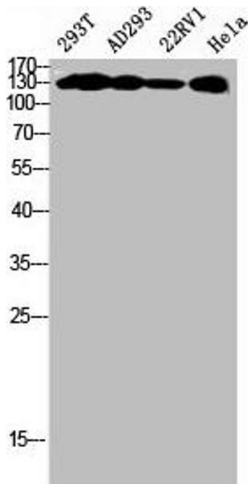
Preservative: Sodium azide

Precaution of Use: This product contains Sodium azide: a POISONOUS AND HAZARDOUS SUBSTANCE which should be handled by trained staff only.

Storage: -20 °C,-80 °C

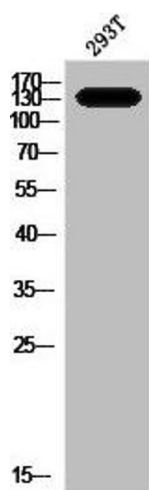
Storage Comment: Upon receipt, store at -20°C or -80°C. Avoid repeated freeze.

Images



Western Blotting

Image 1. Western Blot analysis of 293T AD293 22RV1 HELA cells using Phospho-MYPT1 (T853) Polyclonal Antibody



Western Blotting

Image 2. Western Blot analysis of 293T cells using Phospho-MYPT1 (T853) Polyclonal Antibody