

Datasheet for ABIN718211
anti-Clavesin 1 antibody (AA 231-330)

2 Images

[Go to Product page](#)

Overview

Quantity:	100 µL
Target:	Clavesin 1 (CLVS1)
Binding Specificity:	AA 231-330
Reactivity:	Rat, Mouse
Host:	Rabbit
Clonality:	Polyclonal
Conjugate:	This Clavesin 1 antibody is un-conjugated
Application:	Immunofluorescence (Cultured Cells) (IF (cc)), Immunofluorescence (Paraffin-embedded Sections) (IF (p)), ELISA, Immunohistochemistry (Paraffin-embedded Sections) (IHC (p)), Immunohistochemistry (Frozen Sections) (IHC (fro))

Product Details

Immunogen:	KLH conjugated synthetic peptide derived from human Clavesin-1
Isotype:	IgG
Specificity:	Based on the similarity among the proteins, there is a chance that this antibody could react with Clavesin-2
Cross-Reactivity:	Mouse, Rat
Predicted Reactivity:	Human,Dog,Cow,Sheep,Pig,Horse,Chicken,Rabbit
Purification:	Purified by Protein A.

Target Details

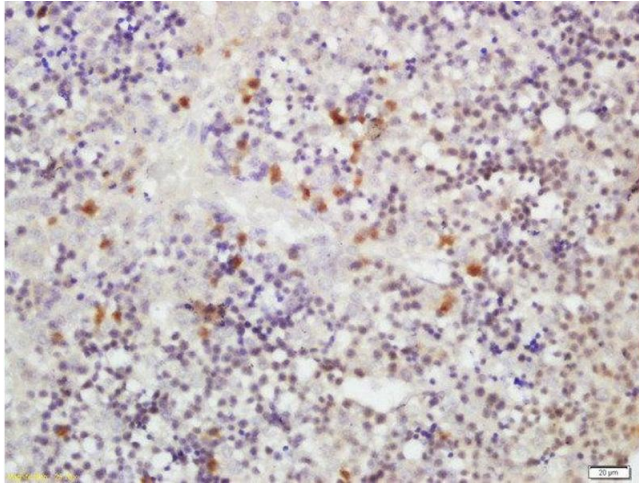
Target:	Clavesin 1 (CLVS1)
Alternative Name:	Clavesin (CLVS1 Products)
Background:	Synonyms: CRALBPL, RLBP1L1, Clavesin-1, Cellular retinaldehyde-binding protein-like, Retinaldehyde-binding protein 1-like 1, CLVS1 Background: Required for normal morphology of late endosomes and/or lysosomes in neurons (By similarity). Binds phosphatidylinositol 3,5-bisphosphate (PtdIns(3,5)P2).
Gene ID:	157807
UniProt:	Q8IUQ0

Application Details

Application Notes:	ELISA 1:500-1000 IHC-P 1:200-400 IHC-F 1:100-500 IF(IHC-P) 1:50-200 IF(IHC-F) 1:50-200 IF(ICC) 1:50-200
Restrictions:	For Research Use only

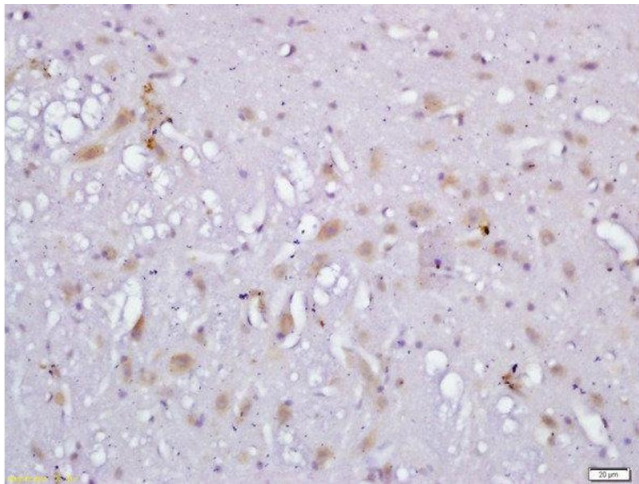
Handling

Format:	Liquid
Concentration:	1 µg/µL
Buffer:	0.01M TBS(pH 7.4) with 1 % BSA, 0.02 % Proclin300 and 50 % Glycerol.
Preservative:	ProClin
Precaution of Use:	This product contains ProClin: a POISONOUS AND HAZARDOUS SUBSTANCE, which should be handled by trained staff only.
Storage:	4 °C,-20 °C
Storage Comment:	Shipped at 4°C. Store at -20°C for one year. Avoid repeated freeze/thaw cycles.
Expiry Date:	12 months



Immunohistochemistry (Paraffin-embedded Sections)

Image 1. Formalin-fixed and paraffin embedded fetal mouse liver labeled with Rabbit Anti-RLBP1L1 Polyclonal Antibody, Unconjugated at 1:200 followed by conjugation to the secondary antibody and DAB staining



Immunohistochemistry (Paraffin-embedded Sections)

Image 2. Formalin-fixed and paraffin embedded rat brain labeled with Anti-RLBP1L1 Polyclonal Antibody, Unconjugated followed by conjugation to the secondary antibody and DAB staining