

Datasheet for ABIN7182148

**anti-ZC3HC1 antibody**[Go to Product page](#)**1** Image

## Overview

Quantity:	100 µg
Target:	ZC3HC1
Reactivity:	Human
Host:	Rabbit
Clonality:	Polyclonal
Conjugate:	This ZC3HC1 antibody is un-conjugated
Application:	Western Blotting (WB), ELISA, Immunofluorescence (IF)

## Product Details

Immunogen:	Synthesized peptide derived from Human NIPA around the non-phosphorylation site of S354.
Isotype:	IgG
Cross-Reactivity:	Human, Monkey, Mouse, Rat
Purification:	The antibody was affinity-purified from rabbit antiserum by affinity-chromatography using epitope-specific immunogen.

## Target Details

Target:	ZC3HC1
Alternative Name:	ZC3HC1 ( <a href="#">ZC3HC1 Products</a> )
Background:	HNIPA antibody, NIPA_HUMAN antibody, Nuclear interacting partner of ALK antibody, Nuclear interacting partner of anaplastic lymphoma kinase antibody, Nuclear-interacting partner of ALK antibody, Nuclear-interacting partner of anaplastic lymphoma kinase antibody, zc3hc1 antibody,

## Target Details

Zinc finger C3HC type containing 1 antibody, Zinc finger C3HC-type protein 1 antibody

UniProt: [Q86WB0](#)

## Application Details

Application Notes: WB:1:500-1:2000, IF:1:200-1:1000, ELISA:1:40000,

Restrictions: For Research Use only

## Handling

Format: Liquid

Buffer: Liquid in PBS containing 50 % glycerol, 0.5 % BSA and 0.02 % sodium azide.

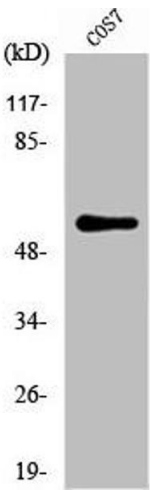
Preservative: Sodium azide

Precaution of Use: This product contains Sodium azide: a POISONOUS AND HAZARDOUS SUBSTANCE which should be handled by trained staff only.

Storage: -20 °C,-80 °C

Storage Comment: Upon receipt, store at -20°C or -80°C. Avoid repeated freeze.

## Images



### Western Blotting

**Image 1.** Western Blot analysis of COS7 cells using NIPA Polyclonal Antibody