



[Go to Product page](#)

Datasheet for ABIN7182178

anti-Neuregulin 1 antibody (Isoform 10)

2 Images

Overview

Quantity:	100 µL
Target:	Neuregulin 1 (NRG1)
Binding Specificity:	Isoform 10
Reactivity:	Human
Host:	Rabbit
Clonality:	Polyclonal
Conjugate:	This Neuregulin 1 antibody is un-conjugated
Application:	Western Blotting (WB), Immunohistochemistry (IHC), ELISA

Product Details

Immunogen:	Synthesized peptide derived from Human NRG1 isoform-10.
Isotype:	IgG
Cross-Reactivity:	Human, Mouse, Rat
Purification:	The antibody was affinity-purified from rabbit antiserum by affinity-chromatography using epitope-specific immunogen.

Target Details

Target:	Neuregulin 1 (NRG1)
Alternative Name:	NRG1 (NRG1 Products)
Background:	Background: The protein encoded by this gene is a membrane glycoprotein that that mediates

Target Details

cell-cell signaling and plays a critical role in the growth and development of multiple organ systems. An extraordinary variety of different isoforms are produced from this gene through alternative promoter usage and splicing. These isoforms are expressed in a tissue-specific manner and differ significantly in their structure, and are classified as types I, II, III, IV, V and VI. Dysregulation of this gene has been linked to diseases such as cancer, schizophrenia, and bipolar disorder (BPD).

Xiao-Feng Le, Cancer Res., Jul 2000, 60: 3522 - 3531.

Samuel D. H. Chan, J. Biol. Chem., Sep 1995, 270: 22608.

Daniel C. Gamett, J. Biol. Chem., Aug 1995, 270: 19022.

Mohammed Rahmatullah, Mol. Cell. Biol., Nov 1998, 18: 6245 - 6252.

Aliases: Pro-neuregulin-1, membrane-bound isoform, Pro-NGR1, NRG1, GGF

UniProt: [Q15491](#)

Pathways: [RTK Signaling](#), [Fc-epsilon Receptor Signaling Pathway](#), [EGFR Signaling Pathway](#), [Neurotrophin Signaling Pathway](#), [Regulation of Muscle Cell Differentiation](#)

Application Details

Application Notes: WB:1:500-1:3000, IHC:1:50-1:100,

Restrictions: For Research Use only

Handling

Format: Liquid

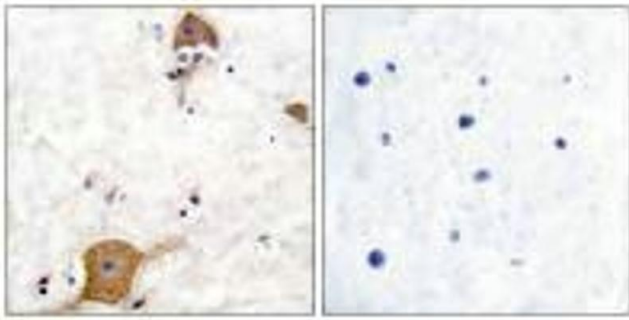
Buffer: Rabbit IgG in phosphate buffered saline (without Mg²⁺ and Ca²⁺), pH 7.4, 150 mM NaCl, 0.02 % sodium azide and 50 % glycerol.

Preservative: Sodium azide

Precaution of Use: This product contains Sodium azide: a POISONOUS AND HAZARDOUS SUBSTANCE which should be handled by trained staff only.

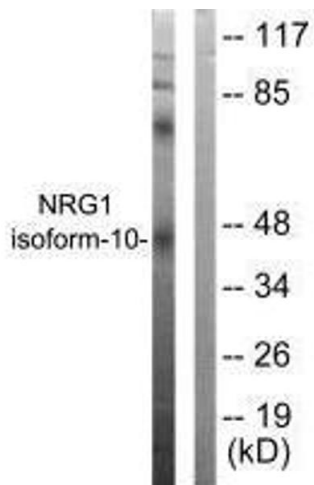
Storage: -20 °C, -80 °C

Storage Comment: Upon receipt, store at -20°C or -80°C. Avoid repeated freeze.



Immunohistochemistry

Image 1. Immunohistochemical analysis of paraffin-embedded human brain tissue using NRG1 isoform-10 antibody.



Western Blotting

Image 2. Western blot analysis of extracts from SKOV3 cells, using NRG1 isoform-10 antibody.