



Datasheet for ABIN7182212  
**anti-CDKN2B antibody**



[Go to Product page](#)

4 Images

Overview

Quantity:	100 µL
Target:	CDKN2B
Reactivity:	Human
Host:	Rabbit
Clonality:	Polyclonal
Conjugate:	This CDKN2B antibody is un-conjugated
Application:	Western Blotting (WB), ELISA, Immunohistochemistry (IHC), Immunofluorescence (IF)

Product Details

Immunogen:	Synthesized peptide derived from Human p15 INK antibody.
Isotype:	IgG
Cross-Reactivity:	Human, Mouse, Rat
Purification:	The antibody was affinity-purified from rabbit antiserum by affinity-chromatography using epitope-specific immunogen.

Target Details

Target:	CDKN2B
Alternative Name:	CDKN2B ( <a href="#">CDKN2B Products</a> )
Background:	Background: Interacts strongly with CDK4 and CDK6. Potent inhibitor. Potential effector of TGF-beta induced cell cycle arrest.

## Target Details

---

Nynke Y. Rots, Blood, Apr 1999, 93: 2721 - 2729.

Stefan Faderl, Clin. Cancer Res., Jul 1999, 5: 1855.

George Wu, Mol. Biol. Cell, Mar 2007, 18: 1018 - 1029.

A. Koenig, Vet. Pathol., Jul 2002, 39: 458.

Aliases: CDK inhibitory protein antibody, CDK4B Inhibitor antibody, Cdkn2b antibody, CDN2B\_HUMAN antibody, Cyclin dependent kinase 4 inhibitor B antibody, Cyclin Dependent Kinase Inhibitor 2B antibody, Cyclin dependent kinase inhibitor 2B p15 inhibits CDK4 antibody, Cyclin dependent kinases 4 and 6 binding protein antibody, Cyclin-dependent kinase 4 inhibitor B antibody, INK4B antibody, MTS 2 antibody, MTS-2 antibody, MTS2 antibody, Multiple tumor suppressor 2 antibody, Multiple Tumor Suppressor 2 antibody, OTTHUMP00000021154 antibody, OTTHUMP00000021155 antibody, p14 CDK inhibitor antibody, p14 INK4b antibody, p14-INK4b antibody, P15 antibody, p15 CDK inhibitor antibody, p15 inhibits CDK4 antibody, p15 INK4b antibody, p15-INK4b antibody, p15INK4B antibody, TP 15 antibody, TP15 antibody

---

UniProt: [P42772](#)

---

Pathways: [Cell Division Cycle, Mitotic G1-G1/S Phases](#)

## Application Details

---

Application Notes: WB:1:500-1:3000, IHC:1:50-1:100, IF:1:100-1:500,

Restrictions: For Research Use only

## Handling

---

Format: Liquid

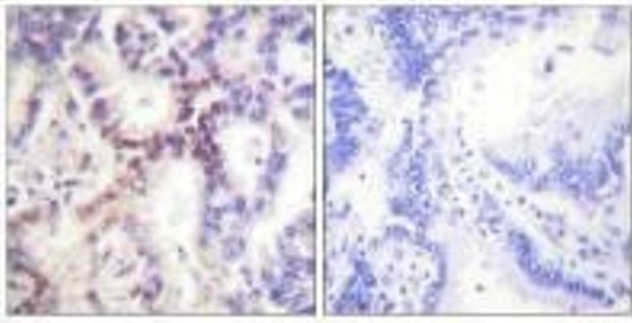
Buffer: Rabbit IgG in phosphate buffered saline (without Mg<sup>2+</sup> and Ca<sup>2+</sup>), pH 7.4, 150 mM NaCl, 0.02 % sodium azide and 50 % glycerol.

Preservative: Sodium azide

Precaution of Use: This product contains Sodium azide: a POISONOUS AND HAZARDOUS SUBSTANCE which should be handled by trained staff only.

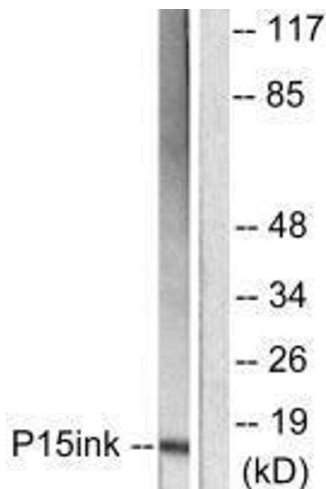
Storage: -20 °C,-80 °C

Storage Comment: Upon receipt, store at -20°C or -80°C. Avoid repeated freeze.



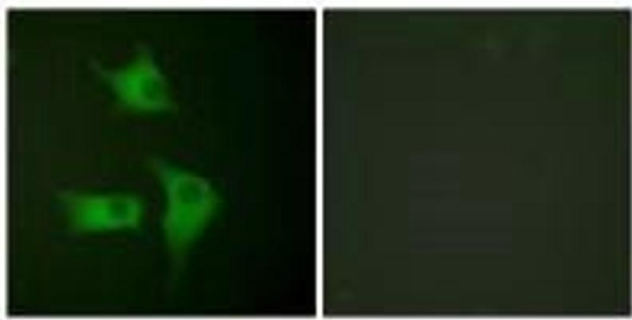
### Immunohistochemistry

**Image 1.** Immunohistochemical analysis of paraffin-embedded human lung carcinoma tissue using p15 INK antibody.



### Western Blotting

**Image 2.** Western blot analysis of extracts from HeLa cells, using p15 INK antibody.



### Immunofluorescence

**Image 3.** Immunofluorescence analysis of HeLa cells, using p15 INK antibody.

Please check the [product details page](#) for more images. Overall 4 images are available for ABIN7182212.