

Datasheet for ABIN7182426

**anti-PKC alpha antibody (pTyr657)**[Go to Product page](#)**1** Image

## Overview

|                      |  |
|----------------------|--|
| Quantity:            | 100 µg                                   |
| Target:              | PKC alpha (PKCa)                         |
| Binding Specificity: | pTyr657                                  |
| Reactivity:          | Human                                    |
| Host:                | Rabbit                                   |
| Clonality:           | Polyclonal                               |
| Conjugate:           | This PKC alpha antibody is un-conjugated |
| Application:         | Western Blotting (WB), ELISA             |

## Product Details

|                   |   |
|-------------------|---|
| Immunogen:        | Synthesized peptide derived from Human PKC alpha around the phosphorylation site of Y657.                             |
| Isotype:          | IgG   |
| Cross-Reactivity: | Human, Mouse, Rat   |
| Purification:     | The antibody was affinity-purified from rabbit antiserum by affinity-chromatography using epitope-specific immunogen. |

## Target Details

|                   |   |
|-------------------|---|
| Target:           | PKC alpha (PKCa)  |
| Alternative Name: | PRKCA ( <a href="#">PKCa Products</a> )   |
| Background:       | KPCA_HUMAN antibody, PKC alpha antibody, PKC beta antibody, PKC delta antibody, PKC |

## Target Details

epsilon antibody, PKC gamma antibody, PKC zeta antibody, PKC-A antibody, PKC-alpha antibody, PKC2 antibody, PKCA antibody, PKCB antibody, PKCD antibody, PKCE antibody, PKCG antibody, PRKCA antibody, PRKCB antibody, PRKCB1 antibody, PRKCB2 antibody, PRKCD antibody, PRKCE antibody, PRKCG antibody, PRKCZ antibody, Protein kinase C alpha antibody, Protein kinase C alpha type antibody, Protein kinase C antibody, Protein kinase C beta antibody, Protein kinase C delta antibody, Protein kinase C epsilon antibody, Protein kinase C gamma antibody, Protein kinase C zeta antibody

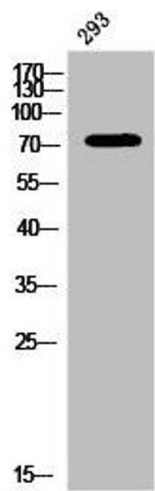
|           |  |
|-----------|--|
| UniProt:  | <a href="#">P17252</a>   |
| Pathways: | <a href="#">WNT Signaling</a> , <a href="#">TCR Signaling</a> , <a href="#">EGFR Signaling Pathway</a> , <a href="#">Neurotrophin Signaling Pathway</a> , <a href="#">Thyroid Hormone Synthesis</a> , <a href="#">cAMP Metabolic Process</a> , <a href="#">Myometrial Relaxation and Contraction</a> , <a href="#">Cell-Cell Junction Organization</a> , <a href="#">Regulation of G-Protein Coupled Receptor Protein Signaling</a> , <a href="#">G-protein mediated Events</a> , <a href="#">Signaling Events mediated by VEGFR1 and VEGFR2</a> , <a href="#">Interaction of EGFR with phospholipase C-gamma</a> , <a href="#">Thromboxane A2 Receptor Signaling</a> , <a href="#">VEGFR1 Specific Signals</a> , <a href="#">VEGF Signaling</a> |

## Application Details

|                    |                                 |
|--------------------|---------------------------------|
| Application Notes: | WB:1:500-1:2000, ELISA:1:10000, |
| Restrictions:      | For Research Use only           |

## Handling

|                    |  |
|--------------------|--|
| Format:            | Liquid   |
| Buffer:            | Liquid in PBS containing 50 % glycerol, 0.5 % BSA and 0.02 % sodium azide.   |
| Preservative:      | Sodium azide   |
| Precaution of Use: | This product contains Sodium azide: a POISONOUS AND HAZARDOUS SUBSTANCE which should be handled by trained staff only. |
| Storage:           | -20 °C,-80 °C  |
| Storage Comment:   | Upon receipt, store at -20°C or -80°C. Avoid repeated freeze.  |



Western Blotting

**Image 1.** Western Blot analysis of 293 cells using Phospho-PKC  $\alpha$  (Y657) Polyclonal Antibody