



[Go to Product page](#)

Datasheet for ABIN7182456

## anti-PKC mu antibody (pSer205)

### 1 Image

#### Overview

Quantity:	100 µg
Target:	PKC mu (PRKD1)
Binding Specificity:	pSer205
Reactivity:	Human
Host:	Rabbit
Clonality:	Polyclonal
Conjugate:	This PKC mu antibody is un-conjugated
Application:	Western Blotting (WB), ELISA, Immunohistochemistry (IHC)

#### Product Details

Immunogen:	Synthesized peptide derived from Human PKD1 around the phosphorylation site of S205.
Isotype:	IgG
Cross-Reactivity:	Human, Mouse, Rat
Purification:	The antibody was affinity-purified from rabbit antiserum by affinity-chromatography using epitope-specific immunogen.

#### Target Details

Target:	PKC mu (PRKD1)
Alternative Name:	PRKD1 ( <a href="#">PRKD1 Products</a> )
Background:	KPCD1_HUMAN antibody, nPKC D1 antibody, nPKC mu antibody, nPKC-D1 antibody, nPKC-mu

## Target Details

antibody, nPKCD1 antibody, nPKCmu antibody, PKC antibody, PKC MU antibody, PKCM antibody, PKCmu antibody, PKD 1 antibody, PKD antibody, PKD1 antibody, PRKCM antibody, PRKD 1 antibody, Prkd1 antibody, Protein kinase C mu antibody, Protein kinase C mu type antibody, Protein kinase D antibody, Protein kinase D1 antibody, Serine/threonine protein kinase D1 antibody, Serine/threonine-protein kinase D1 antibody

UniProt: [Q15139](#)

Pathways: [Myometrial Relaxation and Contraction](#)

## Application Details

Application Notes: WB:1:500-1:2000, IHC:1:100-1:300, ELISA:1:40000,

Restrictions: For Research Use only

## Handling

Format: Liquid

Buffer: Liquid in PBS containing 50 % glycerol, 0.5 % BSA and 0.02 % sodium azide.

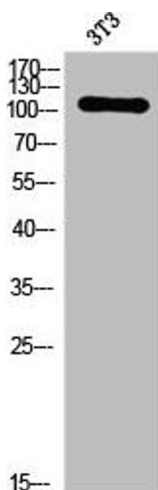
Preservative: Sodium azide

Precaution of Use: This product contains Sodium azide: a POISONOUS AND HAZARDOUS SUBSTANCE which should be handled by trained staff only.

Storage: -20 °C,-80 °C

Storage Comment: Upon receipt, store at -20°C or -80°C. Avoid repeated freeze.

## Images



### Western Blotting

**Image 1.** Western Blot analysis of 3T3 cells using Phospho-PKD1 (S205) Polyclonal Antibody