

Datasheet for ABIN7182481

anti-Phospholipase C gamma 1 antibody (pTyr771)[Go to Product page](#)**1** Image

Overview

Quantity:	100 µg
Target:	Phospholipase C gamma 1 (PLCG1)
Binding Specificity:	pTyr771
Reactivity:	Human
Host:	Rabbit
Clonality:	Polyclonal
Conjugate:	This Phospholipase C gamma 1 antibody is un-conjugated
Application:	Western Blotting (WB), ELISA, Immunohistochemistry (IHC)

Product Details

Immunogen:	Synthesized peptide derived from Human PLC gamma1 around the phosphorylation site of Y771.
Isotype:	IgG
Cross-Reactivity:	Human, Monkey, Mouse, Rat
Purification:	The antibody was affinity-purified from rabbit antiserum by affinity-chromatography using epitope-specific immunogen.

Target Details

Target:	Phospholipase C gamma 1 (PLCG1)
Alternative Name:	PLCG1 (PLCG1 Products)

Target Details

Background: 1 phosphatidyl D myo inositol 4 5 bisphosphate antibody, 1 phosphatidylinositol 4 5 bisphosphate phosphodiesterase gamma 1 antibody, 1-phosphatidylinositol-4,5-bisphosphate phosphodiesterase gamma-1 antibody, Inositoltrisphosphohydrolase antibody, Monophosphatidylinositol phosphodiesterase antibody, NCKAP3 antibody, Phosphatidylinositol phospholipase C antibody, Phosphoinositidase C antibody, Phosphoinositide phospholipase C antibody, Phosphoinositide phospholipase C-gamma-1 antibody, Phospholipase C 148 antibody, Phospholipase C gamma 1 antibody, Phospholipase C-gamma-1 antibody, Phospholipase C-II antibody, PLC gamma 1 antibody, PLC II antibody, PLC-148 antibody, PLC-gamma-1 antibody, PLC-II antibody, PLC1 antibody, PLC148 antibody, Plcg1 antibody, PLCG1_HUMAN antibody, PLCgamma1 antibody

UniProt: [P19174](#)

Pathways: [RTK Signaling](#), [WNT Signaling](#), [TCR Signaling](#), [Fc-epsilon Receptor Signaling Pathway](#), [EGFR Signaling Pathway](#), [Neurotrophin Signaling Pathway](#), [Thyroid Hormone Synthesis](#), [Inositol Metabolic Process](#), [Myometrial Relaxation and Contraction](#), [Regulation of Muscle Cell Differentiation](#), [Regulation of G-Protein Coupled Receptor Protein Signaling](#), [Skeletal Muscle Fiber Development](#), [G-protein mediated Events](#), [Signaling Events mediated by VEGFR1 and VEGFR2](#), [Interaction of EGFR with phospholipase C-gamma](#), [VEGFR1 Specific Signals](#), [VEGF Signaling](#)

Application Details

Application Notes: WB:1:500-1:2000, IHC:1:100-1:300, ELISA:1:40000,

Restrictions: For Research Use only

Handling

Format: Liquid

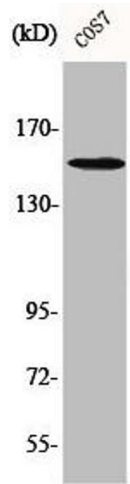
Buffer: Liquid in PBS containing 50 % glycerol, 0.5 % BSA and 0.02 % sodium azide.

Preservative: Sodium azide

Precaution of Use: This product contains Sodium azide: a POISONOUS AND HAZARDOUS SUBSTANCE which should be handled by trained staff only.

Storage: -20 °C,-80 °C

Storage Comment: Upon receipt, store at -20°C or -80°C. Avoid repeated freeze.



Western Blotting

Image 1. Western Blot analysis of COS7 cells using Phospho-PLC γ 1 (Y771) Polyclonal Antibody