



[Go to Product page](#)

Datasheet for ABIN7182527
anti-PTPN1 antibody (pSer50)

1 Image

Overview

Quantity:	100 µg
Target:	PTPN1
Binding Specificity:	pSer50
Reactivity:	Human
Host:	Rabbit
Clonality:	Polyclonal
Conjugate:	This PTPN1 antibody is un-conjugated
Application:	Western Blotting (WB), ELISA, Immunohistochemistry (IHC)

Product Details

Immunogen:	Synthesized peptide derived from Human PTP1B around the phosphorylation site of S50.
Isotype:	IgG
Cross-Reactivity:	Human, Monkey, Mouse, Rat
Purification:	The antibody was affinity-purified from rabbit antiserum by affinity-chromatography using epitope-specific immunogen.

Target Details

Target:	PTPN1
Alternative Name:	PTPN1 (PTPN1 Products)
Background:	Body, Non receptor tyrosine phosphatase 1 antibody, Protein phosphotyrosylphosphatase 1B

Target Details

antibody, Protein tyrosine phosphatase 1B antibody, Protein tyrosine phosphatase non receptor type 1 antibody, Protein tyrosine phosphatase placental antibody, Protein-tyrosine phosphatase 1B antibody, PTN1_HUMAN antibody, PTP 1B antibody, PTP-1B antibody, PTPN 1 antibody, PTPN1 antibody, Tyrosine protein phosphatase non receptor type 1 antibody, Tyrosine-protein phosphatase non-receptor type 1 antibody

UniProt: [P18031](#)

Pathways: [TLR Signaling](#), [Response to Growth Hormone Stimulus](#), [ER-Nucleus Signaling](#), [Platelet-derived growth Factor Receptor Signaling](#)

Application Details

Application Notes: WB:1:500-1:2000, IHC:1:100-1:300, ELISA:1:40000,

Restrictions: For Research Use only

Handling

Format: Liquid

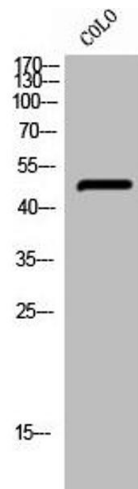
Buffer: Liquid in PBS containing 50 % glycerol, 0.5 % BSA and 0.02 % sodium azide.

Preservative: Sodium azide

Precaution of Use: This product contains Sodium azide: a POISONOUS AND HAZARDOUS SUBSTANCE which should be handled by trained staff only.

Storage: -20 °C,-80 °C

Storage Comment: Upon receipt, store at -20°C or -80°C. Avoid repeated freeze.



Western Blotting

Image 1. Western Blot analysis of COLO cells using Phospho-PTP1B (S50) Polyclonal Antibody