



[Go to Product page](#)

Datasheet for ABIN7182616

anti-Rho-related GTP-binding protein antibody

1 Image

Overview

Quantity:	100 µg
Target:	Rho-related GTP-binding protein (RhO (pan))
Reactivity:	Human
Host:	Rabbit
Clonality:	Polyclonal
Conjugate:	This Rho-related GTP-binding protein antibody is un-conjugated
Application:	ELISA, Western Blotting (WB), Immunohistochemistry (IHC)

Product Details

Immunogen:	Synthesized peptide derived from Human Rhodopsin around the non-phosphorylation site of S334.
Isotype:	IgG
Cross-Reactivity:	Human, Mouse, Rat
Purification:	The antibody was affinity-purified from rabbit antiserum by affinity-chromatography using epitope-specific immunogen.

Target Details

Target:	Rho-related GTP-binding protein (RhO (pan))
Alternative Name:	RHO (RhO (pan) Products)
Background:	CSNBAD1 antibody, MGC138309 antibody, MGC138311 antibody, OPN 2 antibody, OPN2 antibody, opsd antibody, OPSD_HUMAN antibody, opsin 2 antibody, Opsin 2 rod pigment

Target Details

antibody, Opsin-2 antibody, Opsin2 antibody, Retinitis Pigmentosa 4 antibody, Retinitis pigmentosa 4 autosomal dominant antibody, RHO antibody, Rhodopsin antibody, RP 4 antibody, RP4 antibody

UniProt: [P08100](#)

Application Details

Application Notes: WB:1:500-1:2000, IHC:1:100-1:300, ELISA:1:5000,

Restrictions: For Research Use only

Handling

Format: Liquid

Buffer: Liquid in PBS containing 50 % glycerol, 0.5 % BSA and 0.02 % sodium azide.

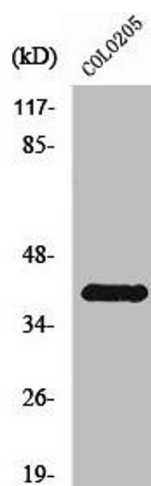
Preservative: Sodium azide

Precaution of Use: This product contains Sodium azide: a POISONOUS AND HAZARDOUS SUBSTANCE which should be handled by trained staff only.

Storage: -20 °C,-80 °C

Storage Comment: Upon receipt, store at -20°C or -80°C. Avoid repeated freeze.

Images



Western Blotting

Image 1. Western Blot analysis of COLO205 cells using Rhodopsin Polyclonal Antibody