

Datasheet for ABIN7182988
anti-WNK1 antibody (pThr60)[Go to Product page](#)

1 Image

Overview

Quantity:	100 µg
Target:	WNK1
Binding Specificity:	pThr60
Reactivity:	Human
Host:	Rabbit
Clonality:	Polyclonal
Conjugate:	This WNK1 antibody is un-conjugated
Application:	Western Blotting (WB), ELISA, Immunohistochemistry (IHC)

Product Details

Immunogen:	Synthesized peptide derived from Human WNK1 around the phosphorylation site of T60.
Isotype:	IgG
Cross-Reactivity:	Human, Mouse, Rat
Purification:	The antibody was affinity-purified from rabbit antiserum by affinity-chromatography using epitope-specific immunogen.

Target Details

Target:	WNK1
Alternative Name:	WNK1 (WNK1 Products)
Background:	Erythrocyte 65 kDa protein antibody, HSN2 antibody, HSN2 antibody, hWNK1 antibody, KDP

Target Details

antibody, KIAA0344 antibody, Kinase deficient protein antibody, MGC163339 antibody, MGC163341 antibody, p65 antibody, PPP1R167 antibody, PRKWINK1 antibody, Prostate derived sterile 20 like kinase antibody, Protein kinase lysine deficient 1 antibody, Protein kinase lysine-deficient 1 antibody, Protein kinase with no lysine 1 antibody, Protein phosphatase 1, regulatory subunit 167 antibody, PSK antibody, Serine/threonine protein kinase WNK1 1 antibody, Serine/threonine protein kinase WNK1 2 antibody, Serine/threonine protein kinase WNK1 antibody, Serine/threonine-protein kinase WNK1 antibody, With no K antibody, WNK lysine deficient protein kinase 1 antibody, WNK lysine deficient protein kinase 1 isoform antibody, WNK1 antibody, WNK1_HUMAN antibody

UniProt: [Q9H4A3](#)

Application Details

Application Notes: WB:1:500-1:2000, IHC:1:100-1:300, ELISA:1:5000,

Restrictions: For Research Use only

Handling

Format: Liquid

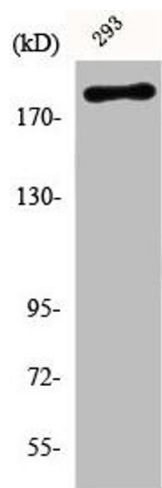
Buffer: Liquid in PBS containing 50 % glycerol, 0.5 % BSA and 0.02 % sodium azide.

Preservative: Sodium azide

Precaution of Use: This product contains Sodium azide: a POISONOUS AND HAZARDOUS SUBSTANCE which should be handled by trained staff only.

Storage: -20 °C,-80 °C

Storage Comment: Upon receipt, store at -20°C or -80°C. Avoid repeated freeze.



Western Blotting

Image 1. Western Blot analysis of 293 cells using Phospho-WNK1 (T60) Polyclonal Antibody