



[Go to Product page](#)

Datasheet for ABIN7183012

anti-BTBD6 antibody

2 Images

Overview

Quantity:	100 µL
Target:	BTBD6
Reactivity:	Human
Host:	Rabbit
Clonality:	Polyclonal
Conjugate:	This BTBD6 antibody is un-conjugated
Application:	Western Blotting (WB), ELISA, Immunohistochemistry (IHC)

Product Details

Immunogen:	Synthesized peptide derived from interf Human BTBD6.
Isotype:	IgG
Cross-Reactivity:	Human, Mouse
Purification:	The antibody was affinity-purified from rabbit antiserum by affinity-chromatography using epitope-specific immunogen.

Target Details

Target:	BTBD6
Alternative Name:	BTBD6 (BTBD6 Products)
Background:	Background: Adapter protein for the CUL3 E3 ubiquitin-protein ligase complex. Involved in late neuronal development and muscle formation By similarity.

Target Details

Wistow G., Mol. Vis. 8:171-184(2002).

The MGC Project Team, Genome Res. 14:2121-2127(2004).

Aliases: AF1 coactivator 1| antibody, BDPL antibody, BTB (POZ) domain containing 6 antibody, BTB domain protein BDPL antibody, BTB/POZ domain-containing protein 6 antibody, BTBD 6 antibody, BTBD6 antibody, BTBD6_HUMAN antibody, Glucocorticoid receptor AF 1 coactivator 1 antibody, Lens BTB domain protein antibody, OTTHUMP00000163908 antibody

UniProt: [Q96KE9](#)

Application Details

Application Notes: WB:1:500-1:3000, IHC:1:50-1:100,

Restrictions: For Research Use only

Handling

Format: Liquid

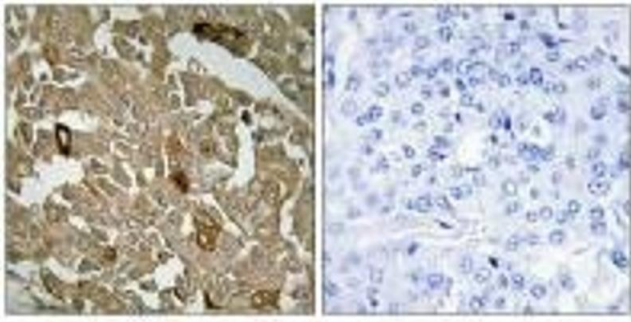
Buffer: Rabbit IgG in phosphate buffered saline (without Mg²⁺ and Ca²⁺), pH 7.4, 150 mM NaCl, 0.02 % sodium azide and 50 % glycerol.

Preservative: Sodium azide

Precaution of Use: This product contains Sodium azide: a POISONOUS AND HAZARDOUS SUBSTANCE which should be handled by trained staff only.

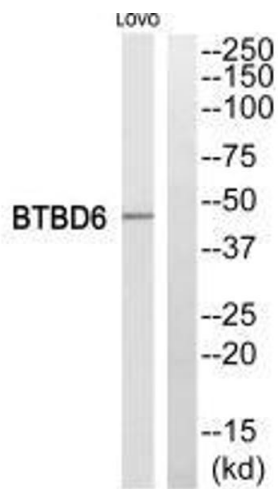
Storage: -20 °C,-80 °C

Storage Comment: Upon receipt, store at -20°C or -80°C. Avoid repeated freeze.



Immunohistochemistry

Image 1. Immunohistochemistry analysis of paraffin-embedded human breast carcinoma tissue, using BTBD6 antibody.



Western Blotting

Image 2. Western blot analysis of extracts from LOVO cells, using BTBD6 antibody.