



[Go to Product page](#)

Datasheet for ABIN7183101
anti-AMOTL1 antibody

1 Image

Overview

Quantity:	100 µL
Target:	AMOTL1
Reactivity:	Human
Host:	Rabbit
Clonality:	Polyclonal
Conjugate:	This AMOTL1 antibody is un-conjugated
Application:	ELISA, Immunohistochemistry (IHC)

Product Details

Immunogen:	Synthesized peptide derived from internal of Human AMOTL1.
Isotype:	IgG
Cross-Reactivity:	Human, Mouse
Purification:	The antibody was affinity-purified from rabbit antiserum by affinity-chromatography using epitope-specific immunogen.

Target Details

Target:	AMOTL1
Alternative Name:	AMOTL1 (AMOTL1 Products)
Background:	Background: Inhibits the Wnt/beta-catenin signaling pathway, probably by recruiting CTNNB1 to recycling endosomes and hence preventing its translocation to the nucleus.

Target Details

Bratt A., Gene 298:69-77(2002).

Bratt A., Gene 310:231-231(2003).

Yu L.-R., J. Proteome Res. 6:4150-4162(2007).

Aliases: 2310010G08Rik antibody, 2310067L22Rik antibody, 4932416D09Rik antibody, AMOL1_HUMAN antibody, Amotl1 antibody, Angiomotin-like protein 1 antibody, FLJ00155 antibody, JEAP antibody, Junction enriched and associated protein antibody, mFLJ00155 antibody

UniProt: [Q8IY63](#)

Application Details

Application Notes: IHC:1:50-1:100,

Restrictions: For Research Use only

Handling

Format: Liquid

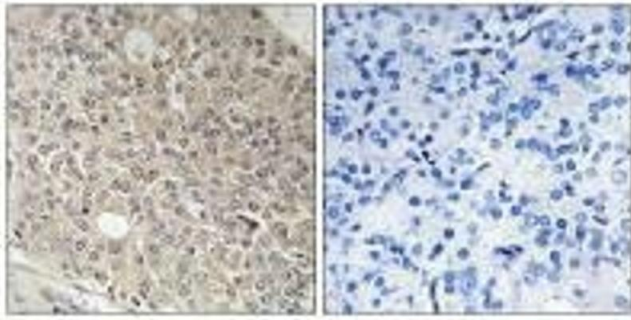
Buffer: Rabbit IgG in phosphate buffered saline (without Mg²⁺ and Ca²⁺), pH 7.4, 150 mM NaCl, 0.02 % sodium azide and 50 % glycerol.

Preservative: Sodium azide

Precaution of Use: This product contains Sodium azide: a POISONOUS AND HAZARDOUS SUBSTANCE which should be handled by trained staff only.

Storage: -20 °C,-80 °C

Storage Comment: Upon receipt, store at -20°C or -80°C. Avoid repeated freeze.



Immunohistochemistry

Image 1. Immunohistochemistry analysis of paraffin-embedded human prostate carcinoma tissue using AMOTL1 antibody.