

Datasheet for ABIN7183132
anti-ARHGEF16 antibody[Go to Product page](#)

1 Image

Overview

Quantity:	100 µL
Target:	ARHGEF16
Reactivity:	Human
Host:	Rabbit
Clonality:	Polyclonal
Conjugate:	This ARHGEF16 antibody is un-conjugated
Application:	Western Blotting (WB), ELISA

Product Details

Immunogen:	Synthesized peptide derived from Internal of Human ARHGEF16.
Isotype:	IgG
Cross-Reactivity:	Human
Purification:	The antibody was affinity-purified from rabbit antiserum by affinity-chromatography using epitope-specific immunogen.

Target Details

Target:	ARHGEF16
Alternative Name:	ARHGEF16 (ARHGEF16 Products)
Background:	Background: Guanyl-nucleotide exchange factor of the RHOG GTPase stimulating the exchange of RHOG-associated GDP for GTP. May play a role in chemotactic cell migration by mediating the activation of RAC1 by EPHA2. May also activate CDC42 and mediate activation of CDC42

Target Details

by the viral protein HPV16 E6.

Sasaki S., Submitted (NOV-1996) to the EMBL/GenBank/DDBJ databases.

Kalnine N., Submitted (MAY-2003) to the EMBL/GenBank/DDBJ databases.

Gregory S.G., Nature 441:315-321(2006).

Aliases: ARHGEF 16 antibody, ARHGEF16 antibody, ARHGG_HUMAN antibody, Ephexin 4 antibody, Ephexin-4 antibody, EPHEXIN4 antibody, GEF16 antibody, NBR antibody, Putative Neuroblastoma Protein antibody, Rho guanine exchange factor (GEF) 16 antibody, Rho guanine nucleotide exchange factor (GEF) 16 antibody, Rho guanine nucleotide exchange factor 16 antibody

UniProt: [Q5VV41](#)

Pathways: [Neurotrophin Signaling Pathway](#)

Application Details

Application Notes: WB:1:500-1:3000,

Restrictions: For Research Use only

Handling

Format: Liquid

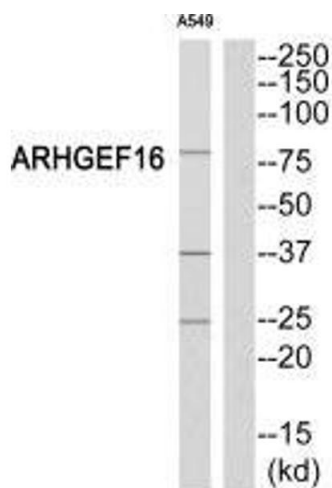
Buffer: Rabbit IgG in phosphate buffered saline (without Mg²⁺ and Ca²⁺), pH 7.4, 150 mM NaCl, 0.02 % sodium azide and 50 % glycerol.

Preservative: Sodium azide

Precaution of Use: This product contains Sodium azide: a POISONOUS AND HAZARDOUS SUBSTANCE which should be handled by trained staff only.

Storage: -20 °C, -80 °C

Storage Comment: Upon receipt, store at -20°C or -80°C. Avoid repeated freeze.



Western Blotting

Image 1. Western blot analysis of extracts from A549 cells, using ARHGEF16 antibody.