

Datasheet for ABIN7183145  
**anti-Arylsulfatase D antibody**[Go to Product page](#)

## 2 Images

## Overview

Quantity:	100 µL
Target:	Arylsulfatase D (ARSD)
Reactivity:	Human
Host:	Rabbit
Clonality:	Polyclonal
Conjugate:	This Arylsulfatase D antibody is un-conjugated
Application:	ELISA, Immunohistochemistry (IHC), Immunofluorescence (IF)

## Product Details

Immunogen:	Synthesized peptide derived from internal of Human ARSD.
Isotype:	IgG
Cross-Reactivity:	Human
Purification:	The antibody was affinity-purified from rabbit antiserum by affinity-chromatography using epitope-specific immunogen.

## Target Details

Target:	Arylsulfatase D (ARSD)
Alternative Name:	ARSD ( <a href="#">ARSD Products</a> )
Background:	Background: The protein encoded by this gene is a member of the sulfatase family. Sulfatases are essential for the correct composition of bone and cartilage matrix. The encoded protein is postrationally glycosylated and localized to the lysosome. This gene is located within a

## Target Details

cluster of similar arylsulfatase genes on chromosome X. A related pseudogene has been identified in the pseudoautosomal region of chromosome Y.

Franco B., Cell 81:15-25(1995).

Urbitsch P., DNA Cell Biol. 19:765-773(2000).

Aliases: arSD antibody, ARSD\_HUMAN antibody, Arylsulfatase D antibody, ASD antibody, EC 3.1.6 antibody, OTTHUMP00000022848 antibody, OTTHUMP00000022849 antibody

UniProt: [P51689](#)

## Application Details

Application Notes: IHC:1:50-1:100, IF:1:100-1:500,

Restrictions: For Research Use only

## Handling

Format: Liquid

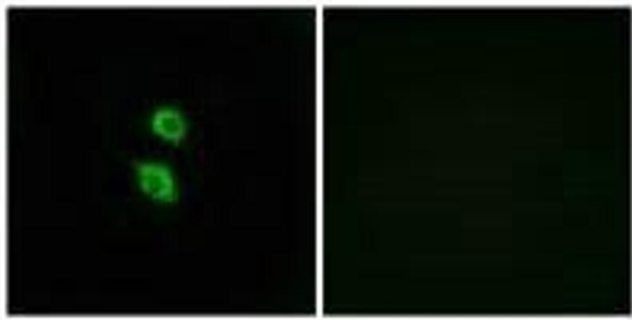
Buffer: Rabbit IgG in phosphate buffered saline (without Mg<sup>2+</sup> and Ca<sup>2+</sup>), pH 7.4, 150 mM NaCl, 0.02 % sodium azide and 50 % glycerol.

Preservative: Sodium azide

Precaution of Use: This product contains Sodium azide: a POISONOUS AND HAZARDOUS SUBSTANCE which should be handled by trained staff only.

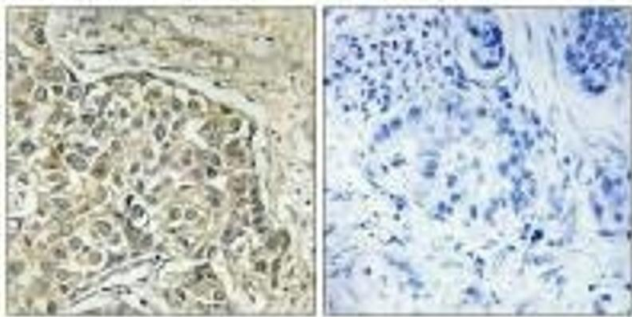
Storage: -20 °C, -80 °C

Storage Comment: Upon receipt, store at -20°C or -80°C. Avoid repeated freeze.



#### Immunofluorescence

**Image 1.** Immunofluorescence analysis of MCF-7 cells, using ARSD antibody.



#### Immunohistochemistry

**Image 2.** Immunohistochemistry analysis of paraffin-embedded human lung carcinoma tissue using ARSD antibody.