



Datasheet for ABIN7183178 anti-BAGE2 antibody



[Go to Product page](#)

1 Image

Overview

Quantity:	100 µL
Target:	BAGE2
Reactivity:	Human
Host:	Rabbit
Clonality:	Polyclonal
Conjugate:	This BAGE2 antibody is un-conjugated
Application:	ELISA, Immunohistochemistry (IHC)

Product Details

Immunogen:	Synthesized peptide derived from internal of Human BAGE2.
Isotype:	IgG
Cross-Reactivity:	Human
Purification:	The antibody was affinity-purified from rabbit antiserum by affinity-chromatography using epitope-specific immunogen.

Target Details

Target:	BAGE2
Alternative Name:	BAGE2 (BAGE2 Products)
Background:	Background: Unknown. Candidate gene encoding tumor antigens.

Ruault M., Eur. J. Hum. Genet. 10:833-840(2002).

Target Details

Ruault M., Genomics 81:391-399(2003).

The MGC Project Team, Genome Res. 14:2121-2127(2004).

Aliases: BAGE2 antibody, B melanoma antigen 2 antibody, Cancer/testis antigen 2.2 antibody, CT2.2 antibody

UniProt: [Q86Y30](#)

Application Details

Application Notes: IHC:1:50-1:100,

Restrictions: For Research Use only

Handling

Format: Liquid

Buffer: Rabbit IgG in phosphate buffered saline (without Mg²⁺ and Ca²⁺), pH 7.4, 150 mM NaCl, 0.02 % sodium azide and 50 % glycerol.

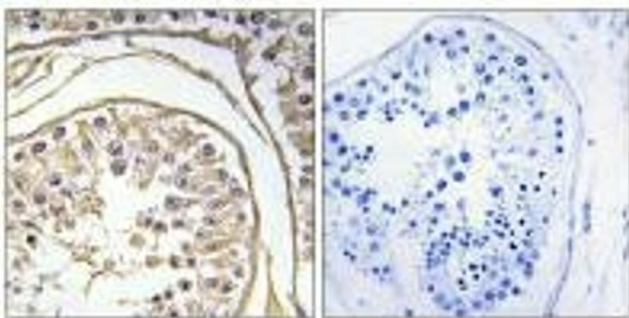
Preservative: Sodium azide

Precaution of Use: This product contains Sodium azide: a POISONOUS AND HAZARDOUS SUBSTANCE which should be handled by trained staff only.

Storage: -20 °C,-80 °C

Storage Comment: Upon receipt, store at -20°C or -80°C. Avoid repeated freeze.

Images



Immunohistochemistry

Image 1. Immunohistochemistry analysis of paraffin-embedded human testis tissue using BAGE2 antibody.