



Datasheet for ABIN7183269
anti-FBXW7 antibody



[Go to Product page](#)

1 Image

Overview

Quantity:	100 µL
Target:	FBXW7
Reactivity:	Human
Host:	Rabbit
Clonality:	Polyclonal
Conjugate:	This FBXW7 antibody is un-conjugated
Application:	Western Blotting (WB), ELISA

Product Details

Immunogen:	Synthesized peptide derived from internal of Human CDC40.
Isotype:	IgG
Cross-Reactivity:	Human, Mouse, Rat
Purification:	The antibody was affinity-purified from rabbit antiserum by affinity-chromatography using epitope-specific immunogen.

Target Details

Target:	FBXW7
Alternative Name:	CDC4 (FBXW7 Products)
Background:	Background: Associates with the spliceosome late in the splicing pathway and may function in the second step of pre-mRNA splicing.

Target Details

Zhou Z., EMBO J. 17:2095-2106(1998).

Lindsey L.A., J. Biol. Chem. 273:32771-32775(1998).

Mungall A.J., Nature 425:805-811(2003).

Aliases: Cdc40 antibody, Cell division cycle 40 antibody, Cell division cycle 40 homolog antibody, EH binding protein 3 antibody, EH-binding protein 3 antibody, Ehb3 antibody, hPRP17 antibody, Pre mRNA processing factor 17 antibody, Pre mRNA splicing factor 17 antibody, Pre-mRNA-processing factor 17 antibody, PRP17 antibody, PRP17 homolog antibody, PRP17_HUMAN antibody, PRPF17 antibody

UniProt: [O60508](#)

Pathways: [Notch Signaling](#), [EGFR Signaling Pathway](#)

Application Details

Application Notes: WB:1:500-1:3000,

Restrictions: For Research Use only

Handling

Format: Liquid

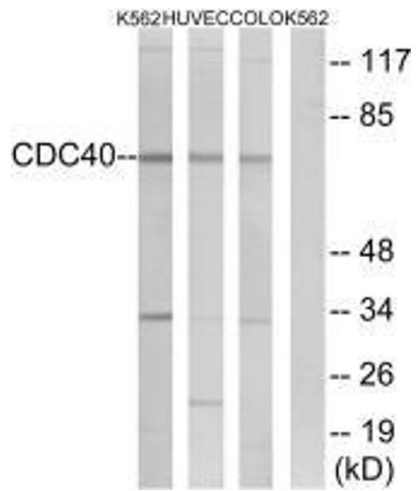
Buffer: Rabbit IgG in phosphate buffered saline (without Mg²⁺ and Ca²⁺), pH 7.4, 150 mM NaCl, 0.02 % sodium azide and 50 % glycerol.

Preservative: Sodium azide

Precaution of Use: This product contains Sodium azide: a POISONOUS AND HAZARDOUS SUBSTANCE which should be handled by trained staff only.

Storage: -20 °C,-80 °C

Storage Comment: Upon receipt, store at -20°C or -80°C. Avoid repeated freeze.



Western Blotting

Image 1. Western blot analysis of extracts from K562 cells, HUVEC cells and COLO cells, using CDC40 antibody.