



[Go to Product page](#)

Datasheet for ABIN7183290

## anti-CDY1 antibody

### 1 Image

#### Overview

|              |                                     |
|--------------|-------------------------------------|
| Quantity:    | 100 µL                              |
| Target:      | CDY1                                |
| Reactivity:  | Human                               |
| Host:        | Rabbit                              |
| Clonality:   | Polyclonal                          |
| Conjugate:   | This CDY1 antibody is un-conjugated |
| Application: | Western Blotting (WB), ELISA        |

#### Product Details

|                   |   |
|-------------------|---|
| Immunogen:        | Synthesized peptide derived from Internal of Human CDY1.  |
| Isotype:          | IgG   |
| Cross-Reactivity: | Human   |
| Purification:     | The antibody was affinity-purified from rabbit antiserum by affinity-chromatography using epitope-specific immunogen. |

#### Target Details

|                   |   |
|-------------------|---|
| Target:           | CDY1  |
| Alternative Name: | CDY1 ( <a href="#">CDY1 Products</a> )  |
| Background:       | Background: Has histone acetyltransferase activity, with a preference for histone H4. |

Lahn B.T., Science 278:675-680(1997).

## Target Details

Lahn B.T., Nat. Genet. 21:429-433(1999).

Lahn B.T., Proc. Natl. Acad. Sci. U.S.A. 99:8707-8712(2002).

Aliases: CDY1 antibody, CDY1A, antibody, CDY1B Testis-specific chromodomain protein Y 1 antibody, EC 2.3.1.48 antibody

UniProt: [Q9Y6F8](#)

## Application Details

Application Notes: WB:1:500-1:3000,

Restrictions: For Research Use only

## Handling

Format: Liquid

Buffer: Rabbit IgG in phosphate buffered saline (without Mg<sup>2+</sup> and Ca<sup>2+</sup>), pH 7.4, 150 mM NaCl, 0.02 % sodium azide and 50 % glycerol.

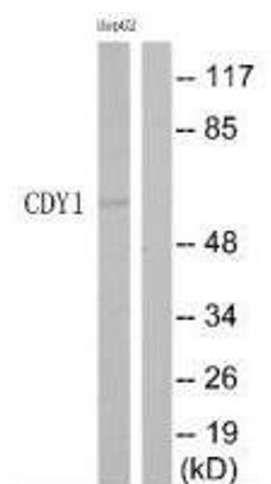
Preservative: Sodium azide

Precaution of Use: This product contains Sodium azide: a POISONOUS AND HAZARDOUS SUBSTANCE which should be handled by trained staff only.

Storage: -20 °C, -80 °C

Storage Comment: Upon receipt, store at -20°C or -80°C. Avoid repeated freeze.

## Images



### Western Blotting

**Image 1.** Western blot analysis of extracts from HepG2 cells, using CDY1 antibody.