

Datasheet for ABIN718331
anti-S100PBP antibody (AA 331-408)[Go to Product page](#)[1 Image](#)[1 Publication](#)

Overview

Quantity:	100 µL
Target:	S100PBP
Binding Specificity:	AA 331-408
Reactivity:	Human, Mouse
Host:	Rabbit
Clonality:	Polyclonal
Conjugate:	This S100PBP antibody is un-conjugated
Application:	Western Blotting (WB), ELISA, Flow Cytometry (FACS), Immunofluorescence (Cultured Cells) (IF (cc)), Immunofluorescence (Paraffin-embedded Sections) (IF (p)), Immunohistochemistry (Frozen Sections) (IHC (fro)), Immunohistochemistry (Paraffin-embedded Sections) (IHC (p))

Product Details

Immunogen:	KLH conjugated synthetic peptide derived from human S100P binding protein
Isotype:	IgG
Cross-Reactivity:	Human, Mouse
Predicted Reactivity:	Rat
Purification:	Purified by Protein A.

Target Details

Target:	S100PBP
---------	---------

Target Details

Alternative Name:	S100P binding protein (S100PBP Products)
Background:	<p>Synonyms: S1PBPR, S1P-binding protein, S1P-binding protein Riken, S1PBP</p> <p>Background: S100PBP was originally cloned from a pancreatic epithelioid carcinoma library and encodes a predicted 408 amino acid protein. RT-PCR detected S100PBP expression in brain, breast, spleen, and lung, but not in pancreas and liver. GFP-tagged S100PBP localized to nuclei of transfected HeLa cells.</p>
Gene ID:	64766
UniProt:	Q96BU1

Application Details

Application Notes:	<p>WB 1:300-5000</p> <p>ELISA 1:500-1000</p> <p>FCM 1:20-100</p> <p>IHC-P 1:200-400</p> <p>IHC-F 1:100-500</p> <p>IF(IHC-P) 1:50-200</p> <p>IF(IHC-F) 1:50-200</p> <p>IF(ICC) 1:50-200</p>
Restrictions:	For Research Use only

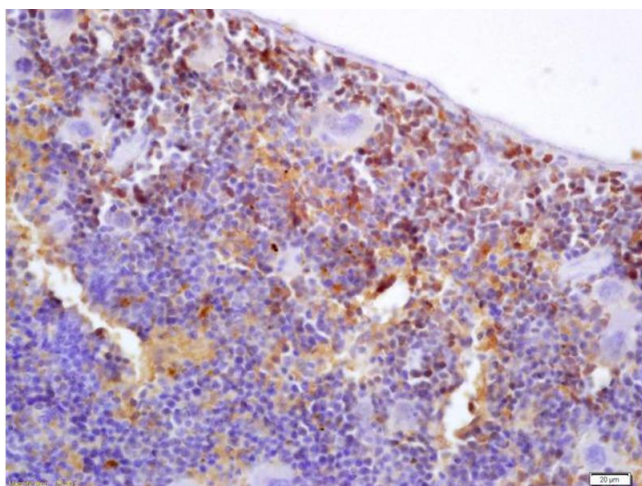
Handling

Format:	Liquid
Concentration:	1 µg/µL
Buffer:	0.01M TBS(pH 7.4) with 1 % BSA, 0.02 % Proclin300 and 50 % Glycerol.
Preservative:	ProClin
Precaution of Use:	This product contains ProClin: a POISONOUS AND HAZARDOUS SUBSTANCE, which should be handled by trained staff only.
Storage:	4 °C,-20 °C
Storage Comment:	Shipped at 4°C. Store at -20°C for one year. Avoid repeated freeze/thaw cycles.
Expiry Date:	12 months

Publications

Product cited in: Mo, Sun, Zhao, Gu, Dong, Liu, Ma, Zhao, Liu, Chi, Sun: "The in-vitro spheroid culture induces a more highly differentiated but tumorigenic population from melanoma cell lines." in: **Melanoma research**, Vol. 23, Issue 4, pp. 254-63, (2013) ([PubMed](#)).

Images



Immunohistochemistry

Image 1. Formalin-fixed and paraffin embedded mouse spleen labeled with Anti-S100PBP/S100P binding protein Polyclonal Antibody, Unconjugated (ABIN718331) at 1:200 followed by conjugation to the secondary antibody and DAB staining