



Datasheet for ABIN7183315
anti-CHPF antibody



[Go to Product page](#)

3 Images

Overview

Quantity:	100 µL
Target:	CHPF
Reactivity:	Human
Host:	Rabbit
Clonality:	Polyclonal
Conjugate:	This CHPF antibody is un-conjugated
Application:	Western Blotting (WB), ELISA, Immunohistochemistry (IHC), Immunofluorescence (IF)

Product Details

Immunogen:	Synthesized peptide derived from internal of Human CHSS2.
Isotype:	IgG
Cross-Reactivity:	Human, Mouse, Rat
Purification:	The antibody was affinity-purified from rabbit antiserum by affinity-chromatography using epitope-specific immunogen.

Target Details

Target:	CHPF
Alternative Name:	CHPF (CHPF Products)
Background:	Background: Has both beta-1,3-glucuronic acid and beta-1,4-N-acetylgalactosamine transferase activity. Transfers glucuronic acid (GlcUA) from UDP-GlcUA and N-acetylgalactosamine (GalNAc) from UDP-GalNAc to the non-reducing end of the elongating chondroitin polymer.

Target Details

Isoform 2 may facilitate PARK2 transport into the mitochondria. In collaboration with PARK2, isoform 2 may enhance cell viability and protect cells from oxidative stress.

Kitagawa H., J. Biol. Chem. 278:23666-23671(2003).

Yada T., J. Biol. Chem. 278:30235-30247(2003).

Clark H.F., Genome Res. 13:2265-2270(2003)

Aliases: CHPF antibody, CSS2 antibody, UNQ651/PRO1281Chondroitin sulfate synthase 2 antibody, EC 2.4.1.175 antibody, EC 2.4.1.226 antibody, Chondroitin glucuronyltransferase 2 antibody, Chondroitin-polymerizing factor antibody, ChPF antibody, Glucuronosyl-N-acetylgalactosaminyl-proteoglycan 4-beta-N-acetylgalactosaminyltransferase II antibody, N-acetylgalactosaminyl-proteoglycan 3-beta-glucuronosyltransferase II antibody, N-acetylgalactosaminyltransferase 2 antibody

UniProt: [Q8IZ52](#)

Pathways: [Glycosaminoglycan Metabolic Process](#), [SARS-CoV-2 Protein Interactome](#)

Application Details

Application Notes: WB:1:500-1:3000, IHC:1:50-1:100, IF:1:100-1:500,

Restrictions: For Research Use only

Handling

Format: Liquid

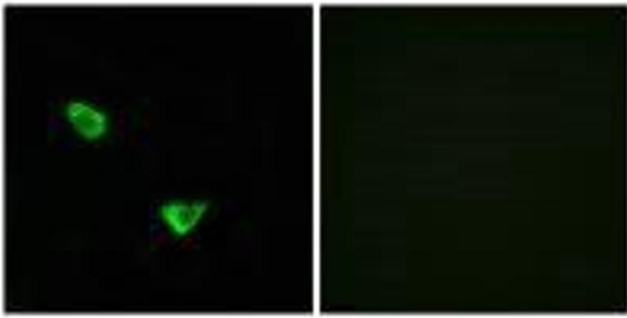
Buffer: Rabbit IgG in phosphate buffered saline (without Mg²⁺ and Ca²⁺), pH 7.4, 150 mM NaCl, 0.02 % sodium azide and 50 % glycerol.

Preservative: Sodium azide

Precaution of Use: This product contains Sodium azide: a POISONOUS AND HAZARDOUS SUBSTANCE which should be handled by trained staff only.

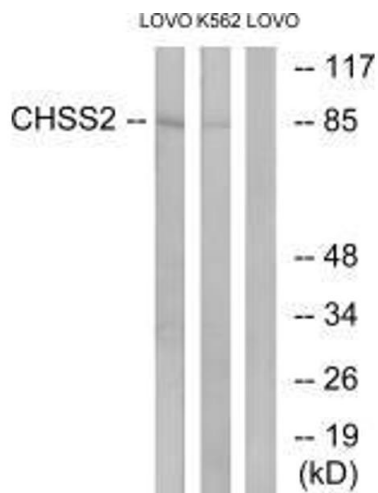
Storage: -20 °C,-80 °C

Storage Comment: Upon receipt, store at -20°C or -80°C. Avoid repeated freeze.



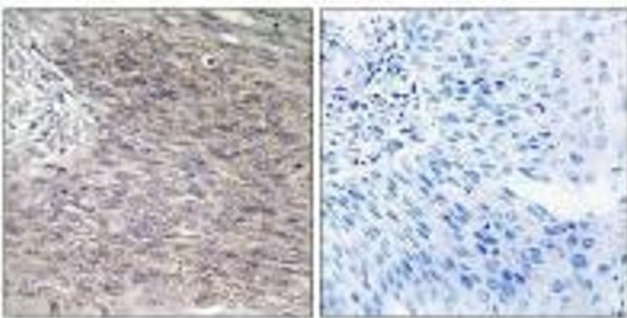
Immunofluorescence

Image 1. Immunofluorescence analysis of MCF-7 cells, using CHSS2 antibody.



Western Blotting

Image 2. Western blot analysis of extracts from LOVO cells and K562 cells, using CHSS2 antibody.



Immunohistochemistry

Image 3. Immunohistochemistry analysis of paraffin-embedded human cervix carcinoma tissue using CHSS2 antibody.