

Datasheet for ABIN7183328

anti-CMTM1 antibody**1** Image[Go to Product page](#)

Overview

| | |
|--------------|--------------------------------------|
| Quantity: | 100 µL |
| Target: | CMTM1 |
| Reactivity: | Human |
| Host: | Rabbit |
| Clonality: | Polyclonal |
| Conjugate: | This CMTM1 antibody is un-conjugated |
| Application: | ELISA, Immunofluorescence (IF) |

Product Details

| | |
|-------------------|---|
| Immunogen: | Synthesized peptide derived from internal of Human CKLF1. |
| Isotype: | IgG |
| Cross-Reactivity: | Human |
| Purification: | The antibody was affinity-purified from rabbit antiserum by affinity-chromatography using epitope-specific immunogen. |

Target Details

| | |
|-------------------|--|
| Target: | CMTM1 |
| Alternative Name: | CMTM1 (CMTM1 Products) |
| Background: | Background: This gene belongs to the chemokine-like factor gene superfamily, a novel family that is similar to the chemokine and the transmembrane 4 superfamilies of signaling molecules. The protein encoded by this gene may play an important role in testicular |

Target Details

development. Alternatively spliced transcript variants encoding different isoforms have been identified. Naturally occurring read-through transcription occurs between this locus and the neighboring locus CKLF (chemokine-like factor).

Han W., Genomics 81:609-617(2003).

Wang L., Submitted (NOV-2002) to the EMBL/GenBank/DDBJ databases.

Aliases: chemokine like factor super family 1 antibody, chemokine like factor superfamily 1 antibody, chemokine like factor superfamily member 1 antibody, Chemokine-like factor superfamily member 1 antibody, CKLF like MARVEL transmembrane domain containing 1 antibody, CKLF like MARVEL transmembrane domain containing protein 1 antibody, CKLF-like MARVEL transmembrane domain-containing protein 1 antibody, CKLF1_HUMAN antibody, CKLFH1 antibody, CKLFH1a antibody, CKLFSF1 antibody, CMTM1 antibody

UniProt: [Q8IZ96](#)

Application Details

Application Notes: IF:1:100-1:500,

Restrictions: For Research Use only

Handling

Format: Liquid

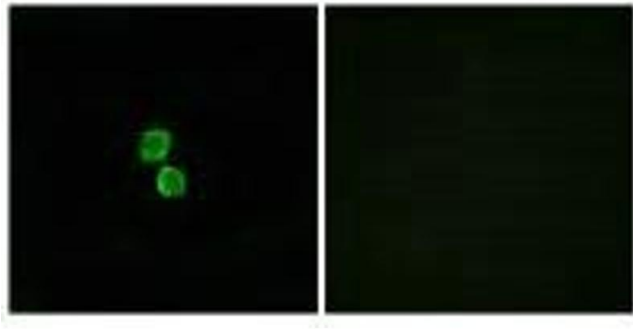
Buffer: Rabbit IgG in phosphate buffered saline (without Mg²⁺ and Ca²⁺), pH 7.4, 150 mM NaCl, 0.02 % sodium azide and 50 % glycerol.

Preservative: Sodium azide

Precaution of Use: This product contains Sodium azide: a POISONOUS AND HAZARDOUS SUBSTANCE which should be handled by trained staff only.

Storage: -20 °C, -80 °C

Storage Comment: Upon receipt, store at -20°C or -80°C. Avoid repeated freeze.



Immunofluorescence

Image 1. Immunofluorescence analysis of MCF-7 cells, using CKLF1 antibody.