



Datasheet for ABIN7183335  
**anti-CLCN4 antibody**



[Go to Product page](#)

2 Images

Overview

Quantity:	100 µL
Target:	CLCN4
Reactivity:	Human
Host:	Rabbit
Clonality:	Polyclonal
Conjugate:	This CLCN4 antibody is un-conjugated
Application:	Western Blotting (WB), ELISA, Immunofluorescence (IF), Immunohistochemistry (IHC)

Product Details

Immunogen:	Synthesized peptide derived from internal of Human CLCN4.
Isotype:	IgG
Cross-Reactivity:	Human, Mouse, Rat
Purification:	The antibody was affinity-purified from rabbit antiserum by affinity-chromatography using epitope-specific immunogen.

Target Details

Target:	CLCN4
Alternative Name:	CLCN4 ( <a href="#">CLCN4 Products</a> )
Background:	Background: Proton-coupled chloride transporter. Functions as antiport system and exchanges chloride ions against protons.

## Target Details

---

van Slegtenhorst M.A., Hum. Mol. Genet. 3:547-552(1994).

Kawasaki M., Am. J. Physiol. 277:C948-C954(1999).

Rae J.L., Submitted (JUL-1999) to the EMBL/GenBank/DDBJ databases.

Aliases: Chloride channel 4 antibody, Chloride channel protein 4 antibody, Chloride channel, voltage sensitive 4 antibody, Chloride transporter ClC-4 antibody, ClC 4A antibody, ClC-4 antibody, CLC4 antibody, ClC4A antibody, CLCN4 antibody, CLCN4\_HUMAN antibody, H(+)/Cl(-) exchange transporter 4 antibody, MGC163150 antibody

---

UniProt: [P51793](#)

## Application Details

---

Application Notes: WB:1:500-1:3000, IHC:1:50-1:200, IF:1:100-1:200,

Restrictions: For Research Use only

## Handling

---

Format: Liquid

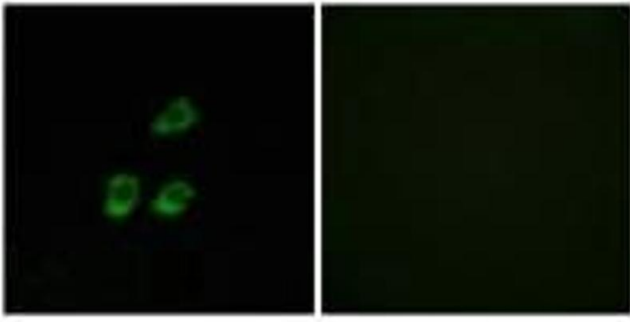
Buffer: Rabbit IgG in phosphate buffered saline (without Mg<sup>2+</sup> and Ca<sup>2+</sup>), pH 7.4, 150 mM NaCl, 0.02 % sodium azide and 50 % glycerol.

Preservative: Sodium azide

Precaution of Use: This product contains Sodium azide: a POISONOUS AND HAZARDOUS SUBSTANCE which should be handled by trained staff only.

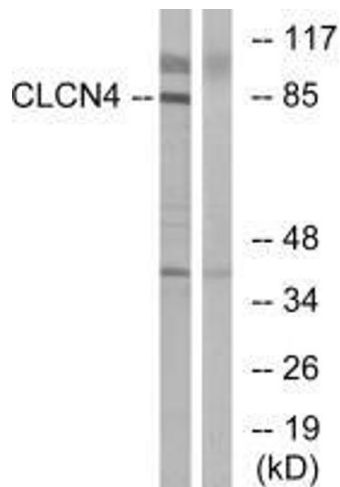
Storage: -20 °C, -80 °C

Storage Comment: Upon receipt, store at -20°C or -80°C. Avoid repeated freeze.



### Immunofluorescence

**Image 1.** Immunofluorescence analysis of HUVEC cells, using CLCN4 antibody.



### Western Blotting

**Image 2.** Western blot analysis of extracts from MCF-7 cells, using CLCN4 antibody.