

Datasheet for ABIN7183348

anti-CLN6 antibody**2** Images[Go to Product page](#)

Overview

Quantity:	100 µL
Target:	CLN6
Reactivity:	Human
Host:	Rabbit
Clonality:	Polyclonal
Application:	ELISA, Western Blotting (WB), Immunohistochemistry (IHC)

Product Details

Immunogen:	Synthesized peptide derived from internal of Human CLN6.
Isotype:	IgG
Cross-Reactivity:	Human
Purification:	The antibody was affinity-purified from rabbit antiserum by affinity-chromatography using epitope-specific immunogen.

Target Details

Target:	CLN6
Alternative Name:	CLN6 (CLN6 Products)
Background:	Background: This gene is one of eight which have been associated with neuronal ceroid lipofuscinoses (NCL). Also referred to as Batten disease, NCL comprises a class of autosomal recessive, neurodegenerative disorders affecting children. The genes responsible likely encode proteins involved in the degradation of post-translationally modified proteins in lysosomes. The

Target Details

primary defect in NCL disorders is thought to be associated with lysosomal storage function.

Ota T., Nat. Genet. 36:40-45(2004).

The MGC Project Team, Genome Res. 14:2121-2127(2004).

Mole S.E., Exp. Cell Res. 298:399-406(2004).

Aliases: CLN6 antibody, Ceroid-lipofuscinosis neuronal protein 6 antibody, Protein CLN6 antibody

UniProt: [Q9NWW5](#)

Pathways: [Glycosaminoglycan Metabolic Process](#)

Application Details

Application Notes: WB:1:500-1:3000, IHC:1:50-1:100,

Restrictions: For Research Use only

Handling

Format: Liquid

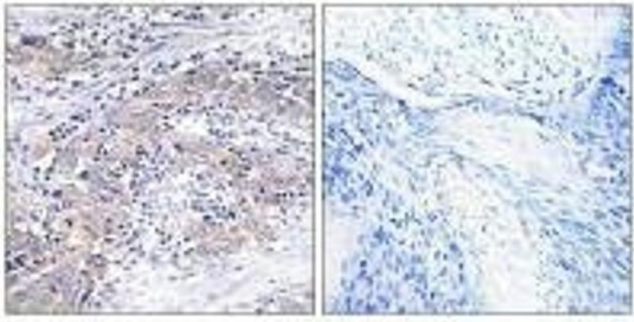
Buffer: Rabbit IgG in phosphate buffered saline (without Mg²⁺ and Ca²⁺), pH 7.4, 150 mM NaCl, 0.02 % sodium azide and 50 % glycerol.

Preservative: Sodium azide

Precaution of Use: This product contains Sodium azide: a POISONOUS AND HAZARDOUS SUBSTANCE which should be handled by trained staff only.

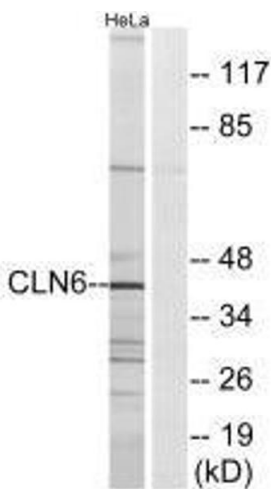
Storage: -20 °C,-80 °C

Storage Comment: Upon receipt, store at -20°C or -80°C. Avoid repeated freeze.



Immunohistochemistry

Image 1. Immunohistochemistry analysis of paraffin-embedded human cervix tissue using CLN6 antibody.



Western Blotting

Image 2. Western blot analysis of extracts from HeLa cells, using CLN6 antibody.