



[Go to Product page](#)

Datasheet for ABIN7183357

anti-CNTD2 antibody

1 Image

Overview

Quantity:	100 µL
Target:	CNTD2
Reactivity:	Human
Host:	Rabbit
Clonality:	Polyclonal
Application:	ELISA, Immunohistochemistry (IHC)

Product Details

Immunogen:	Synthesized peptide derived from internal of Human CNTD2.
Isotype:	IgG
Cross-Reactivity:	Human
Purification:	The antibody was affinity-purified from rabbit antiserum by affinity-chromatography using epitope-specific immunogen.

Target Details

Target:	CNTD2
Alternative Name:	CNTD2 (CNTD2 Products)
Background:	Background: 2 isoforms of the human protein are produced by alternative splicing. Ota T., Nat. Genet. 36:40-45(2004).

Target Details

Aliases: CNTD2 antibody, CNTD2_HUMAN antibody, Cyclin N terminal domain containing 2 antibody, Cyclin N terminal domain containing protein 2 antibody, Cyclin N-terminal domain-containing protein 2 antibody, FLJ13265 antibody

UniProt: [Q9H8S5](#)

Application Details

Application Notes: IHC:1:50-1:100,

Restrictions: For Research Use only

Handling

Format: Liquid

Buffer: Rabbit IgG in phosphate buffered saline (without Mg²⁺ and Ca²⁺), pH 7.4, 150 mM NaCl, 0.02 % sodium azide and 50 % glycerol.

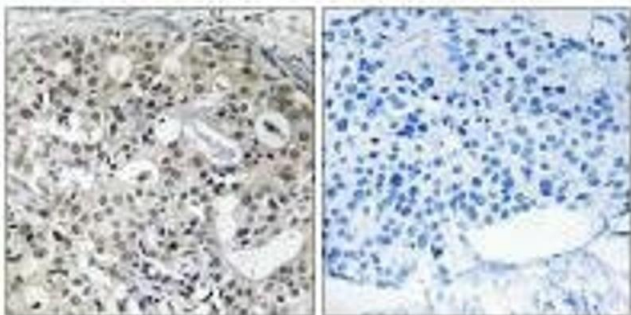
Preservative: Sodium azide

Precaution of Use: This product contains Sodium azide: a POISONOUS AND HAZARDOUS SUBSTANCE which should be handled by trained staff only.

Storage: -20 °C,-80 °C

Storage Comment: Upon receipt, store at -20°C or -80°C. Avoid repeated freeze.

Images



Immunohistochemistry

Image 1. Immunohistochemistry analysis of paraffin-embedded human breast carcinoma tissue using CNTD2 antibody.