



[Go to Product page](#)

Datasheet for ABIN7183368

## anti-COL6a3 antibody

### 2 Images

#### Overview

Quantity:	100 µL
Target:	COL6a3
Reactivity:	Human
Host:	Rabbit
Clonality:	Polyclonal
Application:	Immunohistochemistry (IHC), ELISA, Immunofluorescence (IF)

#### Product Details

Immunogen:	Synthesized peptide derived from internal of Human Collagen VI alpha3.
Isotype:	IgG
Cross-Reactivity:	Human, Mouse
Purification:	The antibody was affinity-purified from rabbit antiserum by affinity-chromatography using epitope-specific immunogen.

#### Target Details

Target:	COL6a3
Alternative Name:	COL6A3 ( <a href="#">COL6a3 Products</a> )
Background:	Background: Collagen VI acts as a cell-binding protein.  Chu M.-L., EMBO J. 9:385-393(1990). Zanussi S., J. Biol. Chem. 267:24082-24089(1992).

## Target Details

Liu T., J. Proteome Res. 4:2070-2080(2005).

Aliases: CO6A3\_HUMAN antibody, COL6A3 antibody, Collagen alpha-3(VI) chain antibody, Collagen type VI alpha 3 antibody, Collagen VI alpha 3 antibody

UniProt: [P12111](#)

## Application Details

Application Notes: IHC:1:50-1:100, IF:1:100-1:500,

Restrictions: For Research Use only

## Handling

Format: Liquid

Buffer: Rabbit IgG in phosphate buffered saline (without Mg<sup>2+</sup> and Ca<sup>2+</sup>), pH 7.4, 150 mM NaCl, 0.02 % sodium azide and 50 % glycerol.

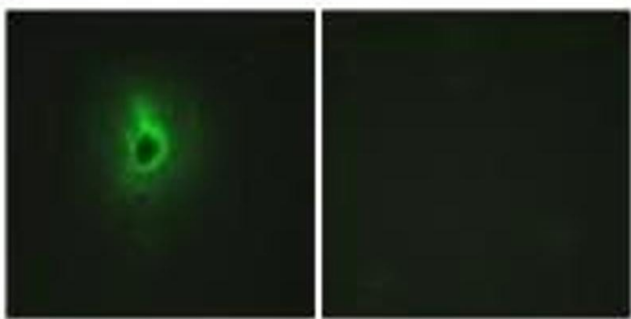
Preservative: Sodium azide

Precaution of Use: This product contains Sodium azide: a POISONOUS AND HAZARDOUS SUBSTANCE which should be handled by trained staff only.

Storage: -20 °C,-80 °C

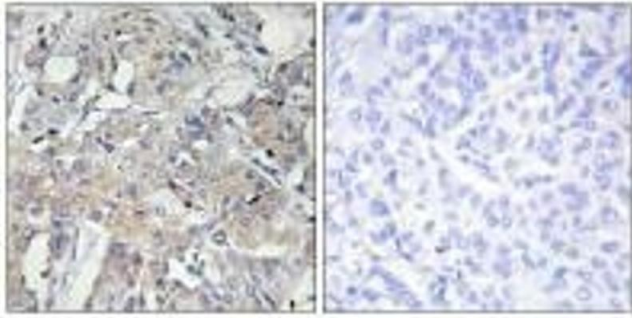
Storage Comment: Upon receipt, store at -20°C or -80°C. Avoid repeated freeze.

## Images



### Immunofluorescence

**Image 1.** Immunofluorescence analysis of HeLa cells, using Collagen VI  $\alpha$ 3 antibody.



### Immunohistochemistry

**Image 2.** Immunohistochemistry analysis of paraffin-embedded human breast carcinoma tissue using Collagen VI  $\alpha$ 3 antibody.