



[Go to Product page](#)

Datasheet for ABIN7183400

anti-CSTL1 antibody

1 Image

Overview

Quantity:	100 µL
Target:	CSTL1
Reactivity:	Human
Host:	Rabbit
Clonality:	Polyclonal
Conjugate:	This CSTL1 antibody is un-conjugated
Application:	ELISA, Immunofluorescence (IF)

Product Details

Immunogen:	Synthesized peptide derived from internal of Human CSTL1.
Isotype:	IgG
Cross-Reactivity:	Human
Purification:	The antibody was affinity-purified from rabbit antiserum by affinity-chromatography using epitope-specific immunogen.

Target Details

Target:	CSTL1
Alternative Name:	CSTL1 (CSTL1 Products)
Background:	Background: The cystatin superfamily encompasses proteins that contain multiple cystatin-like sequences. Some of the members are active cysteine protease inhibitors, while others have lost or perhaps never acquired this inhibitory activity. There are three inhibitory families in the

Target Details

superfamily, including the type 1 cystatins (stefins), type 2 cystatins and the kininogens. The type 2 cystatin proteins are a class of cysteine proteinase inhibitors found in a variety of human fluids and secretions. The cystatin locus on chromosome 20 contains the majority of the type 2 cystatin genes and pseudogenes. This gene is located at the telomeric end of the cystatin locus and encodes a type 2 cystatin-like protein. The specific function of this protein has not been determined.

Deloukas P., Nature 414:865-871(2001).

The MGC Project Team, Genome Res. 14:2121-2127(2004).

Xiang Y., Submitted (AUG-2004) to the EMBL/GenBank/DDBJ databases.

Aliases: CST1L_HUMAN antibody, CSTL1 antibody, CTES1 antibody, Cystatin-like 1 antibody, dJ322G13.4 antibody, RCET11 antibody

UniProt: [Q9H114](#)

Application Details

Application Notes: IF:1:100-1:500,

Restrictions: For Research Use only

Handling

Format: Liquid

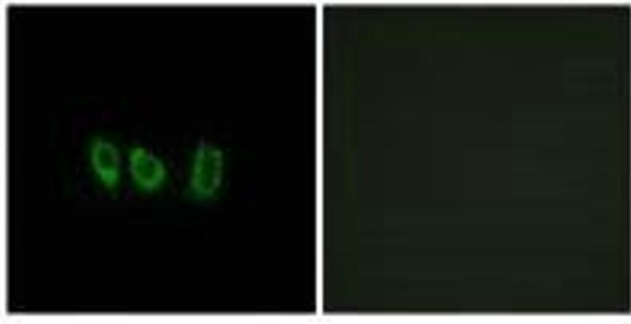
Buffer: Rabbit IgG in phosphate buffered saline (without Mg²⁺ and Ca²⁺), pH 7.4, 150 mM NaCl, 0.02 % sodium azide and 50 % glycerol.

Preservative: Sodium azide

Precaution of Use: This product contains Sodium azide: a POISONOUS AND HAZARDOUS SUBSTANCE which should be handled by trained staff only.

Storage: -20 °C,-80 °C

Storage Comment: Upon receipt, store at -20°C or -80°C. Avoid repeated freeze.



Immunofluorescence

Image 1. Immunofluorescence analysis of A549 cells, using CSTL1 antibody.