

Datasheet for ABIN718346  
**anti-SAMD14 antibody (AA 231-330)**[Go to Product page](#)

## 2 Images

## Overview

Quantity:	100 µL
Target:	SAMD14
Binding Specificity:	AA 231-330
Reactivity:	Human
Host:	Rabbit
Clonality:	Polyclonal
Conjugate:	This SAMD14 antibody is un-conjugated
Application:	Western Blotting (WB), Immunofluorescence (Paraffin-embedded Sections) (IF (p)), Immunofluorescence (Cultured Cells) (IF (cc)), ELISA, Immunohistochemistry (Frozen Sections) (IHC (fro)), Immunohistochemistry (Paraffin-embedded Sections) (IHC (p)), Immunocytochemistry (ICC)

## Product Details

Immunogen:	KLH conjugated synthetic peptide derived from human SAMD14
Isotype:	IgG
Predicted Reactivity:	Human,Mouse,Rat,Dog,Cow,Sheep,Rabbit
Purification:	Purified by Protein A.

## Target Details

Target:	SAMD14
Alternative Name:	SAMD14 ( <a href="#">SAMD14 Products</a> )

## Target Details

Background:	<p>Synonyms: Sterile alpha motif domain-containing protein 14, SAM domain-containing protein 14, SAMD14</p> <p>Background: The sterile alpha motif (SAM) domain is a 70 residue structure found in a large number of proteins involved in diverse processes present throughout eukaryotes. The SAM domain is known to bind RNA and is arranged in a small five-helix bundle with two large interfaces. SAMD14 (sterile alpha motif domain-containing protein 14) is a 417 amino acid protein encoded by the SAMD14 gene which maps to human chromosome 17. Chromosome 17 makes up over 2.5 % of the human genome with about 81 million bases encoding over 1,200 genes. Two key tumor suppressor genes are associated with chromosome 17, namely, p53 and BRCA1. Chromosome 17 is also linked to neurofibromatosis, a condition characterized by neural and epidermal lesions, and dysregulated Schwann cell growth, Alexander disease, Birt-Hogg-Dube syndrome and Canavan disease.</p>
Gene ID:	201191
UniProt:	<a href="#">Q8IZD0</a>

## Application Details

Application Notes:	<p>WB 1:300-5000</p> <p>ELISA 1:500-1000</p> <p>IHC-P 1:200-400</p> <p>IHC-F 1:100-500</p> <p>IF(IHC-P) 1:50-200</p> <p>IF(IHC-F) 1:50-200</p> <p>IF(ICC) 1:50-200</p> <p>ICC 1:100-500</p>
Restrictions:	For Research Use only

## Handling

Format:	Liquid
Concentration:	1 µg/µL
Buffer:	0.01M TBS( pH 7.4) with 1 % BSA, 0.02 % Proclin300 and 50 % Glycerol.
Preservative:	ProClin
Precaution of Use:	This product contains ProClin: a POISONOUS AND HAZARDOUS SUBSTANCE, which should be

Handling

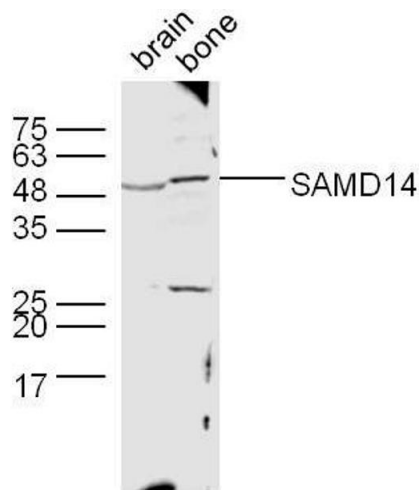
handled by trained staff only.

Storage: 4 °C,-20 °C

Storage Comment: Shipped at 4°C. Store at -20°C for one year. Avoid repeated freeze/thaw cycles.

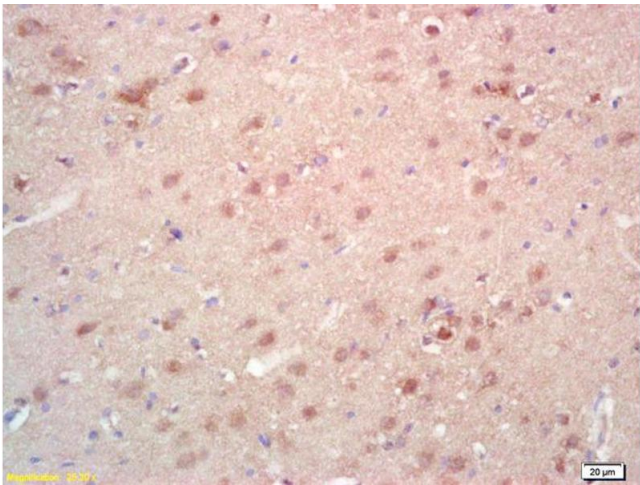
Expiry Date: 12 months

Images



Western Blotting

**Image 1.** Lane 1: Mouse brain lysates, Lane 2: Mouse bone lysates probed with SAMD14 Polyclonal Antibody, unconjugated at 1:300 overnight at 4°C followed by a conjugated secondary antibody at 1:10000 for 60 minutes at 37°C.



Immunohistochemistry

**Image 2.** Formalin-fixed and paraffin embedded rat brain labeled with Rabbit Anti SAMD14 Polyclonal Antibody, Unconjugated (ABIN718346) at 1:200 followed by conjugation to the secondary antibody and DAB staining