

Datasheet for ABIN7183482

anti-FBLN4 antibody

3 Images

[Go to Product page](#)

Overview

Quantity:	100 µL
Target:	FBLN4
Reactivity:	Human
Host:	Rabbit
Clonality:	Polyclonal
Conjugate:	This FBLN4 antibody is un-conjugated
Application:	Western Blotting (WB), Immunohistochemistry (IHC), ELISA, Immunofluorescence (IF)

Product Details

Immunogen:	Synthesized peptide derived from internal of Human EFEMP2.
Isotype:	IgG
Cross-Reactivity:	Human
Purification:	The antibody was affinity-purified from rabbit antiserum by affinity-chromatography using epitope-specific immunogen.

Target Details

Target:	FBLN4
Alternative Name:	EFEMP2 (FBLN4 Products)
Background:	Background: A large number of extracellular matrix proteins have been found to contain variations of the epidermal growth factor (EGF) domain and have been implicated in functions as diverse as blood coagulation, activation of complement and determination of cell fate during

Target Details

development. The protein encoded by this gene contains four EGF2 domains and six calcium-binding EGF2 domains. This gene is necessary for elastic fiber formation and connective tissue development. Defects in this gene are cause of an autosomal recessive cutis laxa syndrome. Alternatively spliced transcript variants have been identified for this gene.

Giltay R., Matrix Biol. 18:469-480(1999).

Zemel R., Submitted (SEP-1998) to the EMBL/GenBank/DDBJ databases.

Katsanis N., Hum. Genet. 106:66-72(2000).

Aliases: EFEMP 2 antibody, EFEMP2 antibody, EGF containing fibulin like extracellular matrix protein 2 antibody, EGF-containing fibulin-like extracellular matrix protein 2 antibody, FBLN 4 antibody, FBLN4 antibody, FBLN4_HUMAN antibody, FIBL 4 antibody, FIBL-4 antibody, FIBL4 antibody, Fibulin 4 antibody, Fibulin-4 antibody, MBP 1 antibody, MBP1 antibody, Mutant p53 binding protein 1 antibody, Protein UPH1 antibody, UPH 1 antibody, UPH1 antibody, UPH1 protein antibody

UniProt: [O95967](#)

Application Details

Application Notes: WB:1:500-1:3000, IHC:1:50-1:100, IF:1:100-1:500,

Restrictions: For Research Use only

Handling

Format: Liquid

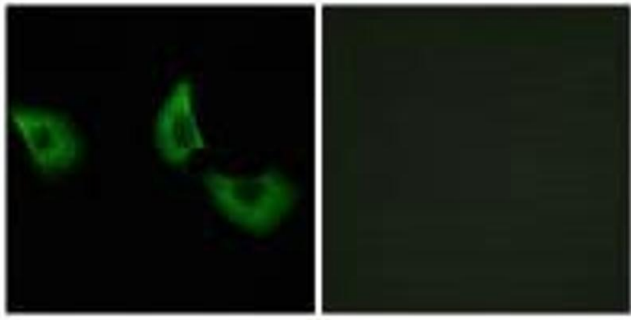
Buffer: Rabbit IgG in phosphate buffered saline (without Mg²⁺ and Ca²⁺), pH 7.4, 150 mM NaCl, 0.02 % sodium azide and 50 % glycerol.

Preservative: Sodium azide

Precaution of Use: This product contains Sodium azide: a POISONOUS AND HAZARDOUS SUBSTANCE which should be handled by trained staff only.

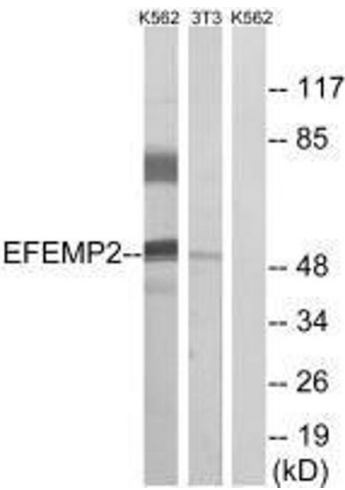
Storage: -20 °C, -80 °C

Storage Comment: Upon receipt, store at -20°C or -80°C. Avoid repeated freeze.



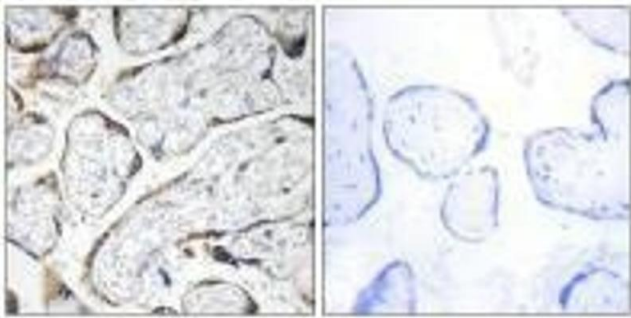
Immunofluorescence

Image 1. Immunofluorescence analysis of A549 cells, using EFEMP2 antibody.



Western Blotting

Image 2. Western blot analysis of extracts from K562 cells and 3T3 cells, using EFEMP2 antibody.



Immunohistochemistry

Image 3. Immunohistochemistry analysis of paraffin-embedded human placenta tissue using EFEMP2 antibody.