



[Go to Product page](#)

Datasheet for ABIN7183506
anti-ELOVL5 antibody

2 Images

Overview

Quantity:	100 µL
Target:	ELOVL5
Reactivity:	Human
Host:	Rabbit
Clonality:	Polyclonal
Conjugate:	This ELOVL5 antibody is un-conjugated
Application:	Western Blotting (WB), ELISA, Immunohistochemistry (IHC)

Product Details

Immunogen:	Synthesized peptide derived from internal of Human ELOVL5.
Isotype:	IgG
Cross-Reactivity:	Human
Purification:	The antibody was affinity-purified from rabbit antiserum by affinity-chromatography using epitope-specific immunogen.

Target Details

Target:	ELOVL5
Alternative Name:	ELOVL5 (ELOVL5 Products)
Background:	Background: Condensing enzyme that catalyzes the synthesis of monounsaturated and of polyunsaturated very long chain fatty acids Acts specifically toward polyunsaturated acyl-CoA with the higher activity toward C18:3(n-6) acyl-CoA.

Target Details

Leonard A.E., Biochem. J. 350:765-770(2000).

Suzuki T., Submitted (JAN-2001) to the EMBL/GenBank/DDBJ databases.

Wiemann S., Genome Res. 11:422-435(2001).

Aliases: 3 keto acyl CoA synthase ELOVL5 antibody, 3-keto acyl-CoA synthase Elovl5 antibody, dJ483K16.1 antibody, Elongation of very long chain fatty acids like 5 antibody, Elongation of very long chain fatty acids protein 5 antibody, ELOV5_HUMAN antibody, ELOVL 5 antibody, ELOVL family member 5 antibody, ELOVL family member 5 elongation of long chain fatty acids antibody, ELOVL family member 5, elongation of long chain fatty acids (FEN1/Elo2, SUR4/Elo3-like, yeast) antibody, ELOVL fatty acid elongase 5 antibody, ELOVL2 antibody, elovl5 antibody, Fatty acid elongase 1 antibody, hELO1 antibody, Homolog of yeast long chain polyunsaturated fatty acid elongation enzyme 2 antibody, OTTHUMP00000017867 antibody, RP3 483K16.1 antibody, RP3-483K16.1 antibody

UniProt: [Q9NYP7](#)

Application Details

Application Notes: WB:1:500-1:3000, IHC:1:50-1:100,

Restrictions: For Research Use only

Handling

Format: Liquid

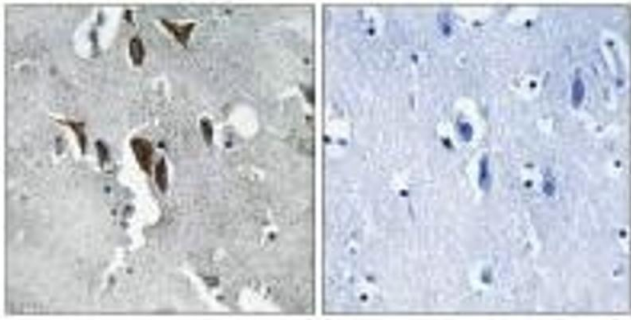
Buffer: Rabbit IgG in phosphate buffered saline (without Mg²⁺ and Ca²⁺), pH 7.4, 150 mM NaCl, 0.02 % sodium azide and 50 % glycerol.

Preservative: Sodium azide

Precaution of Use: This product contains Sodium azide: a POISONOUS AND HAZARDOUS SUBSTANCE which should be handled by trained staff only.

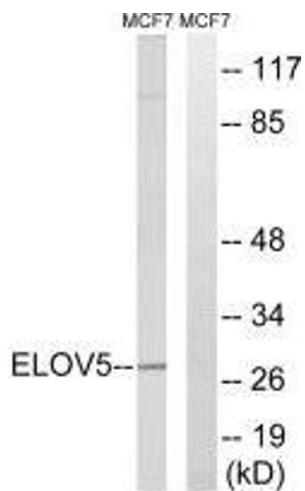
Storage: -20 °C,-80 °C

Storage Comment: Upon receipt, store at -20°C or -80°C. Avoid repeated freeze.



Immunohistochemistry

Image 1. Immunohistochemistry analysis of paraffin-embedded human brain tissue using ELOVL5 antibody.



Western Blotting

Image 2. Western blot analysis of extracts from MCF-7 cells, using ELOVL5 antibody.