



[Go to Product page](#)

Datasheet for ABIN7183518

anti-EPN3 antibody

2 Images

Overview

Quantity:	100 µL
Target:	EPN3
Reactivity:	Human
Host:	Rabbit
Clonality:	Polyclonal
Conjugate:	This EPN3 antibody is un-conjugated
Application:	ELISA, Western Blotting (WB), Immunohistochemistry (IHC)

Product Details

Immunogen:	Synthesized peptide derived from internal of Human EPN3.
Isotype:	IgG
Cross-Reactivity:	Human
Purification:	The antibody was affinity-purified from rabbit antiserum by affinity-chromatography using epitope-specific immunogen.

Target Details

Target:	EPN3
Alternative Name:	EPN3 (EPN3 Products)
Background:	Background: Belongs to the epsin family. 2 isoforms of the human protein are produced by alternative splicing.

Target Details

Spradling K.D., J. Biol. Chem. 276:29257-29267(2001).

Ota T., Nat. Genet. 36:40-45(2004).

Mural R.J., Submitted (SEP-2005) to the EMBL/GenBank/DDBJ databases.

Aliases: EPN 3 antibody, Epn3 antibody, EPN3_HUMAN antibody, EPS 15 interacting protein 3 antibody, EPS-15-interacting protein 3 antibody, Epsin 3 antibody, Epsin-3 antibody, Epsin3 antibody, FLJ20778 antibody, MGC129899 antibody

UniProt: [Q9H201](#)

Application Details

Application Notes: WB:1:500-1:3000, IHC:1:50-1:100,

Restrictions: For Research Use only

Handling

Format: Liquid

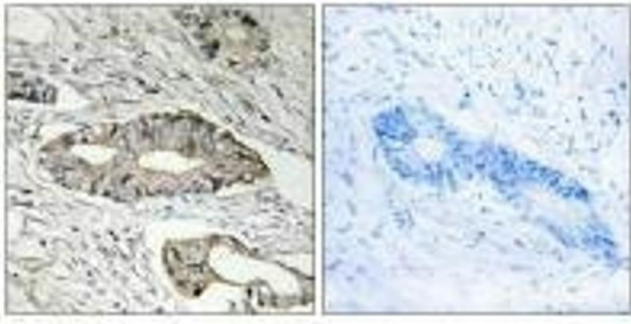
Buffer: Rabbit IgG in phosphate buffered saline (without Mg²⁺ and Ca²⁺), pH 7.4, 150 mM NaCl, 0.02 % sodium azide and 50 % glycerol.

Preservative: Sodium azide

Precaution of Use: This product contains Sodium azide: a POISONOUS AND HAZARDOUS SUBSTANCE which should be handled by trained staff only.

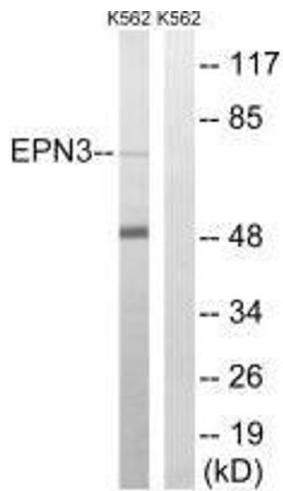
Storage: -20 °C,-80 °C

Storage Comment: Upon receipt, store at -20°C or -80°C. Avoid repeated freeze.



Immunohistochemistry

Image 1. Immunohistochemistry analysis of paraffin-embedded human colon carcinoma tissue, using EPN3 antibody.



Western Blotting

Image 2. Western blot analysis of extracts from K562 cells, using EPN3 antibody.