

Datasheet for ABIN7183525
anti-EPS8-Like 3 antibody

3 Images

[Go to Product page](#)

Overview

Quantity:	100 µL
Target:	EPS8-Like 3 (EPS8L3)
Reactivity:	Human
Host:	Rabbit
Clonality:	Polyclonal
Conjugate:	This EPS8-Like 3 antibody is un-conjugated
Application:	ELISA, Western Blotting (WB), Immunohistochemistry (IHC), Immunofluorescence (IF)

Product Details

Immunogen:	Synthesized peptide derived from internal of Human ES8L3.
Isotype:	IgG
Cross-Reactivity:	Human
Purification:	The antibody was affinity-purified from rabbit antiserum by affinity-chromatography using epitope-specific immunogen.

Target Details

Target:	EPS8-Like 3 (EPS8L3)
Alternative Name:	EPS8L3 (EPS8L3 Products)
Background:	Background: This gene encodes a protein that is related to epidermal growth factor receptor pathway substrate 8 (EPS8), a substrate for the epidermal growth factor receptor. The function of this protein is unknown. Alternatively spliced transcript variants encoding different isoforms

Target Details

exist.

Tocchetti A., Genomics 81:234-244(2003).

Ota T., Nat. Genet. 36:40-45(2004).

Gregory S.G., Nature 441:315-321(2006).

Aliases: EPS8L3 antibody, EPS8R3Epidermal growth factor receptor kinase substrate 8-like protein 3 antibody, EPS8-like protein 3 antibody, Epidermal growth factor receptor pathway substrate 8-related protein 3 antibody, EPS8-related protein 3 antibody

UniProt: [Q8TE67](#)

Application Details

Application Notes: WB:1:500-1:3000, IHC:1:50-1:100, IF:1:100-1:500,

Restrictions: For Research Use only

Handling

Format: Liquid

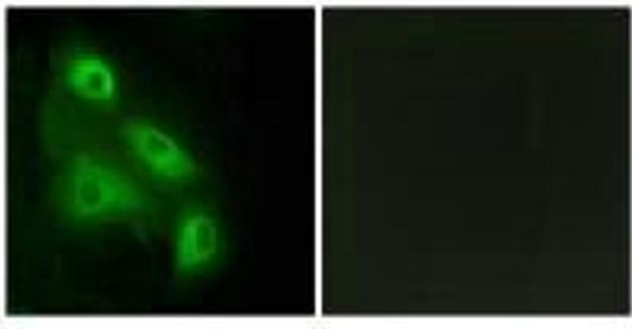
Buffer: Rabbit IgG in phosphate buffered saline (without Mg²⁺ and Ca²⁺), pH 7.4, 150 mM NaCl, 0.02 % sodium azide and 50 % glycerol.

Preservative: Sodium azide

Precaution of Use: This product contains Sodium azide: a POISONOUS AND HAZARDOUS SUBSTANCE which should be handled by trained staff only.

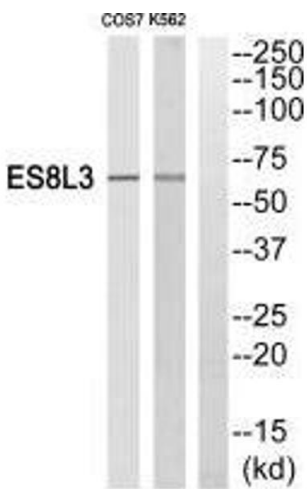
Storage: -20 °C,-80 °C

Storage Comment: Upon receipt, store at -20°C or -80°C. Avoid repeated freeze.



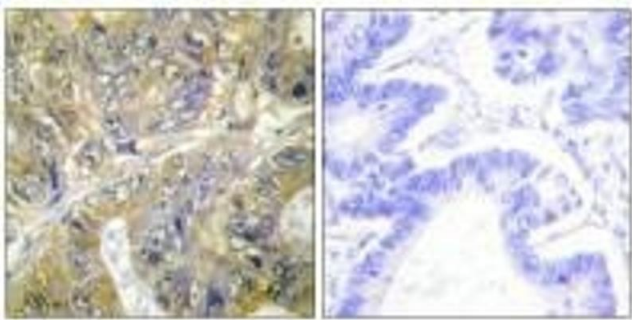
Immunofluorescence

Image 1. Immunofluorescence analysis of HeLa cells, using ES8L3 antibody.



Western Blotting

Image 2. Western blot analysis of extracts from Cos7 cells and K562 cells, using ES8L3 antibody.



Immunohistochemistry

Image 3. Immunohistochemistry analysis of paraffin-embedded human colon carcinoma tissue, using ES8L3 antibody.