



[Go to Product page](#)

Datasheet for ABIN7183532
anti-FAM35A antibody

1 Image

Overview

Quantity:	100 µL
Target:	FAM35A
Reactivity:	Human
Host:	Rabbit
Clonality:	Polyclonal
Conjugate:	This FAM35A antibody is un-conjugated
Application:	Western Blotting (WB), ELISA

Product Details

Immunogen:	Synthesized peptide derived from internal of Human FAM35A/B.
Isotype:	IgG
Cross-Reactivity:	Human
Purification:	The antibody was affinity-purified from rabbit antiserum by affinity-chromatography using epitope-specific immunogen.

Target Details

Target:	FAM35A
Alternative Name:	FAM35A (FAM35A Products)
Background:	Background: Belongs to the FAM35 family. 2 isoforms of the human protein are produced by alternative splicing.

Target Details

Deloukas P., Nature 429:375-381(2004).

The MGC Project Team, Genome Res. 14:2121-2127(2004).

Ota T., Nat. Genet. 36:40-45(2004).

Aliases: SHLD2 antibody, FAM35A antibody, RINN2 antibody, Shieldin complex subunit 2 antibody, Protein FAM35A antibody, RINN1-REV7-interacting novel NHEJ regulator 2 antibody, Shield complex subunit 2 antibody

UniProt: [Q86V20](#)

Application Details

Application Notes: WB:1:500-1:3000,

Restrictions: For Research Use only

Handling

Format: Liquid

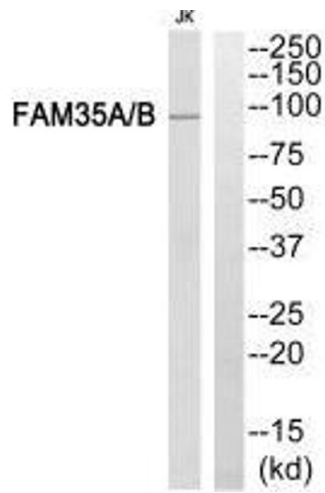
Buffer: Rabbit IgG in phosphate buffered saline (without Mg²⁺ and Ca²⁺), pH 7.4, 150 mM NaCl, 0.02 % sodium azide and 50 % glycerol.

Preservative: Sodium azide

Precaution of Use: This product contains Sodium azide: a POISONOUS AND HAZARDOUS SUBSTANCE which should be handled by trained staff only.

Storage: -20 °C,-80 °C

Storage Comment: Upon receipt, store at -20°C or -80°C. Avoid repeated freeze.



Western Blotting

Image 1. Western blot analysis of extracts from Jurkat cells, using FAM35A/B antibody.