



Datasheet for ABIN7183574  
**anti-GCNT6 antibody**



[Go to Product page](#)

1 Image

### Overview

|              |                                      |
|--------------|--------------------------------------|
| Quantity:    | 100 µL                               |
| Target:      | GCNT6                                |
| Reactivity:  | Human                                |
| Host:        | Rabbit                               |
| Clonality:   | Polyclonal                           |
| Conjugate:   | This GCNT6 antibody is un-conjugated |
| Application: | Western Blotting (WB), ELISA         |

### Product Details

|                   |   |
|-------------------|---|
| Immunogen:        | Synthesized peptide derived from internal of Human GCNT6.   |
| Isotype:          | IgG   |
| Cross-Reactivity: | Human   |
| Purification:     | The antibody was affinity-purified from rabbit antiserum by affinity-chromatography using epitope-specific immunogen. |

### Target Details

|                   |  |
|-------------------|--|
| Target:           | GCNT6  |
| Alternative Name: | GCNT6 ( <a href="#">GCNT6 Products</a> )       |
| Background:       | Background: Glycosyltransferase By similarity. |

Mungall A.J., Nature 425:805-811(2003).

## Target Details

Aliases: Beta-1, 3-galactosyl-O-glycosyl-glycoprotein beta-1, 6-N-acetylglucosaminyltransferase 6, EC 2.4.1.-,

UniProt: [Q5T4J0](#)

## Application Details

Application Notes: WB:1:500-1:3000,

Restrictions: For Research Use only

## Handling

Format: Liquid

Buffer: Rabbit IgG in phosphate buffered saline (without Mg<sup>2+</sup> and Ca<sup>2+</sup>), pH 7.4, 150 mM NaCl, 0.02 % sodium azide and 50 % glycerol.

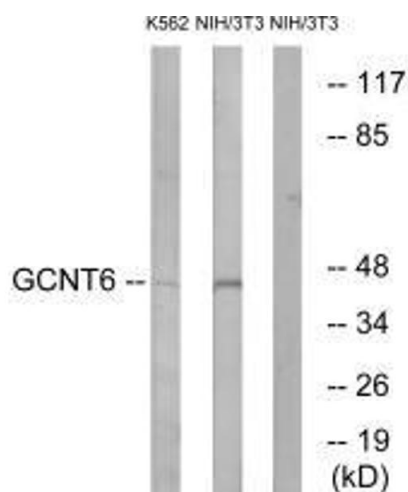
Preservative: Sodium azide

Precaution of Use: This product contains Sodium azide: a POISONOUS AND HAZARDOUS SUBSTANCE which should be handled by trained staff only.

Storage: -20 °C,-80 °C

Storage Comment: Upon receipt, store at -20°C or -80°C. Avoid repeated freeze.

## Images



### Western Blotting

**Image 1.** Western blot analysis of extracts from K562 cells and NIH/3T3 cells, using GCNT6 antibody.