



[Go to Product page](#)

Datasheet for ABIN7183594

anti-GLRB antibody

1 Image

Overview

Quantity:	100 µL
Target:	GLRB
Reactivity:	Human
Host:	Rabbit
Clonality:	Polyclonal
Conjugate:	This GLRB antibody is un-conjugated
Application:	Western Blotting (WB), ELISA

Product Details

Immunogen:	Synthesized peptide derived from internal of Human GLRB.
Isotype:	IgG
Cross-Reactivity:	Human
Purification:	The antibody was affinity-purified from rabbit antiserum by affinity-chromatography using epitope-specific immunogen.

Target Details

Target:	GLRB
Alternative Name:	GLRB (GLRB Products)
Background:	Background: The glycine receptor is a neurotransmitter-gated ion channel. Binding of glycine to its receptor increases the chloride conductance and thus produces hyperpolarization (inhibition of neuronal firing).

Target Details

Handford C.A., Brain Res. Mol. Brain Res. 35:211-219(1996).

Milani N., Genomics 50:341-345(1998).

Ota T., Nat. Genet. 36:40-45(2004).

Aliases: GLRBGlycine receptor subunit beta antibody, Glycine receptor 58 kDa subunit antibody

UniProt: [P48167](#)

Application Details

Application Notes: WB:1:500-1:3000,

Restrictions: For Research Use only

Handling

Format: Liquid

Buffer: Rabbit IgG in phosphate buffered saline (without Mg²⁺ and Ca²⁺), pH 7.4, 150 mM NaCl, 0.02 % sodium azide and 50 % glycerol.

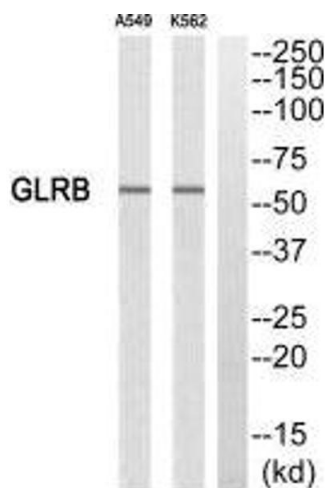
Preservative: Sodium azide

Precaution of Use: This product contains Sodium azide: a POISONOUS AND HAZARDOUS SUBSTANCE which should be handled by trained staff only.

Storage: -20 °C,-80 °C

Storage Comment: Upon receipt, store at -20°C or -80°C. Avoid repeated freeze.

Images



Western Blotting

Image 1. Western blot analysis of extracts from A549 cells and K562 cells, using GLRB antibody.