



Datasheet for ABIN7183675

anti-PKIA antibody



[Go to Product page](#)

2 Images

Overview

Quantity:	100 µL
Target:	PKIA
Reactivity:	Human
Host:	Rabbit
Clonality:	Polyclonal
Conjugate:	This PKIA antibody is un-conjugated
Application:	ELISA, Immunohistochemistry (IHC), Immunofluorescence (IF)

Product Details

Immunogen:	Synthesized peptide derived from internal of Human IPKA.
Isotype:	IgG
Cross-Reactivity:	Human, Mouse
Purification:	The antibody was affinity-purified from rabbit antiserum by affinity-chromatography using epitope-specific immunogen.

Target Details

Target:	PKIA
Alternative Name:	PKIA (PKIA Products)
Background:	Background: Extremely potent competitive inhibitor of cAMP-dependent protein kinase activity, this protein interacts with the catalytic subunit of the enzyme after the cAMP-induced dissociation of its regulatory chains.

Target Details

Olsen S.R., Mol. Endocrinol. 5:1246-1256(1991).

Knoell R., Submitted (FEB-2000) to the EMBL/GenBank/DDBJ databases.

The MGC Project Team, Genome Res. 14:2121-2127(2004).

Aliases: PKIA antibody, PRKACN1cAMP-dependent protein kinase inhibitor alpha antibody, PKI-alpha antibody, cAMP-dependent protein kinase inhibitor antibody, muscle/brain isoform antibody

UniProt: [P61925](#)

Pathways: [Myometrial Relaxation and Contraction](#)

Application Details

Application Notes: IHC:1:50-1:100, IF:1:100-1:500,

Restrictions: For Research Use only

Handling

Format: Liquid

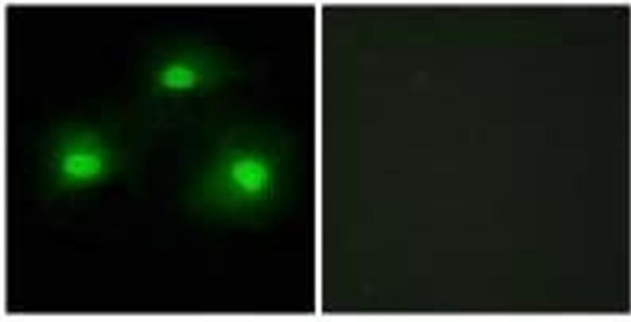
Buffer: Rabbit IgG in phosphate buffered saline (without Mg²⁺ and Ca²⁺), pH 7.4, 150 mM NaCl, 0.02 % sodium azide and 50 % glycerol.

Preservative: Sodium azide

Precaution of Use: This product contains Sodium azide: a POISONOUS AND HAZARDOUS SUBSTANCE which should be handled by trained staff only.

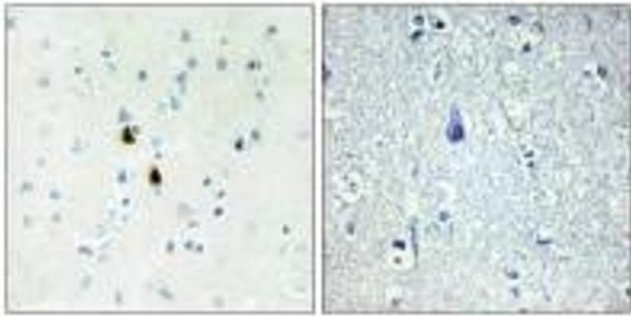
Storage: -20 °C,-80 °C

Storage Comment: Upon receipt, store at -20°C or -80°C. Avoid repeated freeze.



Immunofluorescence

Image 1. Immunofluorescence analysis of HeLa cells, using TPD52 antibody.



Immunohistochemistry

Image 2. Immunohistochemistry analysis of paraffin-embedded human brain tissue, using TPD52 antibody.