



Datasheet for ABIN7183709
anti-KLHL29 antibody



[Go to Product page](#)

1 Image

Overview

Quantity:	100 µL
Target:	KLHL29
Reactivity:	Human
Host:	Rabbit
Clonality:	Polyclonal
Conjugate:	This KLHL29 antibody is un-conjugated
Application:	Immunohistochemistry (IHC), ELISA

Product Details

Immunogen:	Synthesized peptide derived from internal of Human KLHL29.
Isotype:	IgG
Cross-Reactivity:	Human, Mouse
Purification:	The antibody was affinity-purified from rabbit antiserum by affinity-chromatography using epitope-specific immunogen.

Target Details

Target:	KLHL29
Alternative Name:	KLHL29 (KLHL29 Products)
Background:	Background:

Bechtel S., BMC Genomics 8:399-399(2007).

Target Details

The MGC Project Team, Genome Res. 14:2121-2127(2004).

Nagase T., DNA Res. 8:179-187(2001).

Aliases: KBTBD9 antibody, Kelch like protein 29 antibody, kelch repeat and BTB (POZ) domain containing 9 antibody, Kelch repeat and BTB domain containing protein 9 antibody, Kelch repeat and BTB domain-containing protein 9 antibody, Kelch-like protein 29 antibody, KIAA1921 antibody, KLH29_HUMAN antibody, KLHL 29 antibody, Klhl29 antibody

UniProt: [Q96CT2](#)

Application Details

Application Notes: IHC:1:50-1:100,

Restrictions: For Research Use only

Handling

Format: Liquid

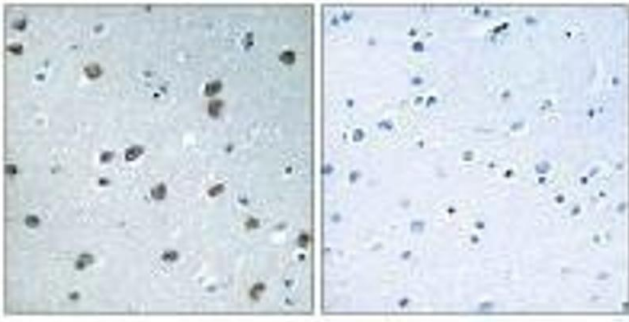
Buffer: Rabbit IgG in phosphate buffered saline (without Mg²⁺ and Ca²⁺), pH 7.4, 150 mM NaCl, 0.02 % sodium azide and 50 % glycerol.

Preservative: Sodium azide

Precaution of Use: This product contains Sodium azide: a POISONOUS AND HAZARDOUS SUBSTANCE which should be handled by trained staff only.

Storage: -20 °C,-80 °C

Storage Comment: Upon receipt, store at -20°C or -80°C. Avoid repeated freeze.



Immunohistochemistry

Image 1. Immunohistochemistry analysis of paraffin-embedded human brain tissue using KLHL29 antibody.