



[Go to Product page](#)

Datasheet for ABIN7183716

anti-KSR2 antibody

2 Images

Overview

Quantity:	100 µL
Target:	KSR2
Reactivity:	Human
Host:	Rabbit
Clonality:	Polyclonal
Conjugate:	This KSR2 antibody is un-conjugated
Application:	ELISA, Western Blotting (WB), Immunofluorescence (IF)

Product Details

Immunogen:	Synthesized peptide derived from internal of Human KSR2.
Isotype:	IgG
Cross-Reactivity:	Human, Mouse
Purification:	The antibody was affinity-purified from rabbit antiserum by affinity-chromatography using epitope-specific immunogen.

Target Details

Target:	KSR2
Alternative Name:	KSR2 (KSR2 Products)
Background:	Background: Location-regulated scaffold connecting MEK to RAF. Has very low protein kinase activity and can phosphorylate MAP2K1 at several Ser and Thr residues with very low efficiency (in vitro).

Target Details

Interaction with BRAF enhances KSR2-mediated phosphorylation of MAP2K1 (in vitro). Blocks MAP3K8 kinase activity and MAP3K8-mediated signaling. Acts as a negative regulator of MAP3K3-mediated activation of ERK, JNK and NF-kappa-B pathways, inhibiting MAP3K3-mediated interleukin-8 production.

Ota T., Nat. Genet. 36:40-45(2004).

Scherer S.E., Nature 440:346-351(2006).

Channavajhala P.L., J. Biol. Chem. 278:47089-47097(2003).

Aliases: FLJ25965 antibody, hKSR 2 antibody, hKSR2 antibody, Kinase suppressor of Ras 2 antibody, KSR 2 antibody, Ksr2 antibody, KSR2_HUMAN antibody

UniProt: [Q6VAB6](#)

Application Details

Application Notes: WB:1:500-1:3000, IF:1:100-1:500,

Restrictions: For Research Use only

Handling

Format: Liquid

Buffer: Rabbit IgG in phosphate buffered saline (without Mg²⁺ and Ca²⁺), pH 7.4, 150 mM NaCl, 0.02 % sodium azide and 50 % glycerol.

Preservative: Sodium azide

Precaution of Use: This product contains Sodium azide: a POISONOUS AND HAZARDOUS SUBSTANCE which should be handled by trained staff only.

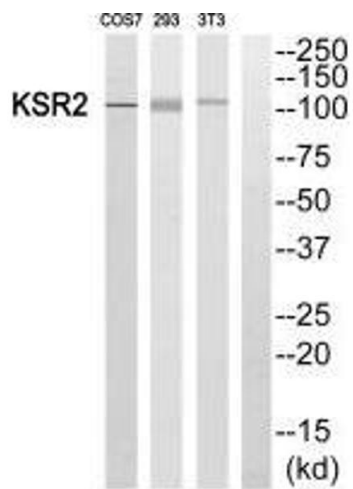
Storage: -20 °C,-80 °C

Storage Comment: Upon receipt, store at -20°C or -80°C. Avoid repeated freeze.



Immunofluorescence

Image 1. Immunofluorescence analysis of HeLa cells, using KSR2 antibody.



Western Blotting

Image 2. Western blot analysis of extracts from COS7, 293 and 3T3 cells, using KSR2 antibody.