

Datasheet for ABIN7183757

**anti-LTK antibody**[Go to Product page](#)**1** Image

## Overview

Quantity:	100 µL
Target:	LTK
Reactivity:	Human
Host:	Rabbit
Clonality:	Polyclonal
Conjugate:	This LTK antibody is un-conjugated
Application:	Western Blotting (WB), ELISA

## Product Details

Immunogen:	Synthesized peptide derived from internal of Human LTK.
Isotype:	IgG
Cross-Reactivity:	Human, Mouse
Purification:	The antibody was affinity-purified from rabbit antiserum by affinity-chromatography using epitope-specific immunogen.

## Target Details

Target:	LTK
Alternative Name:	LTK ( <a href="#">LTK Products</a> )
Background:	Background: Orphan receptor with a tyrosine-protein kinase activity. The exact function of this protein is not known. Studies with chimeric proteins (replacing its extracellular region with that of several known growth factor receptors, such as EGFR and CSFIR) demonstrate its ability to

## Target Details

promote growth and specifically neurite outgrowth, and cell survival. Signaling appears to involve the PI3 kinase pathway. Involved in regulation of the secretory pathway involving endoplasmic reticulum (ER) export sites (ERESs) and ER to Golgi transport.

Toyoshima H., Proc. Natl. Acad. Sci. U.S.A. 90:5404-5408(1993).

Krolewski J.J., EMBO J. 10:2911-2919(1991).

Maru Y., Oncogene Res. 5:199-204(1990).

Aliases: Leukocyte receptor tyrosine kinase antibody, Leukocyte tyrosine kinase antibody, Leukocyte tyrosine kinase receptor antibody, Ltk antibody, LTK\_HUMAN antibody, Protein tyrosine kinase 1 antibody, TYK 1 antibody, TYK1 antibody

UniProt: [P29376](#)

Pathways: [RTK Signaling](#)

## Application Details

Application Notes: WB:1:500-1:3000,

Restrictions: For Research Use only

## Handling

Format: Liquid

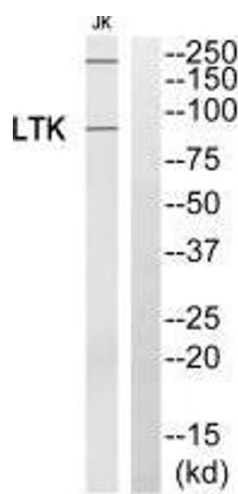
Buffer: Rabbit IgG in phosphate buffered saline (without Mg<sup>2+</sup> and Ca<sup>2+</sup>), pH 7.4, 150 mM NaCl, 0.02 % sodium azide and 50 % glycerol.

Preservative: Sodium azide

Precaution of Use: This product contains Sodium azide: a POISONOUS AND HAZARDOUS SUBSTANCE which should be handled by trained staff only.

Storage: -20 °C,-80 °C

Storage Comment: Upon receipt, store at -20°C or -80°C. Avoid repeated freeze.



Western Blotting

**Image 1.** Western blot analysis of extracts from Jurkat cells, using LTK antibody.