



Datasheet for ABIN7183775  
**anti-MAP9 antibody**



[Go to Product page](#)

1 Image

Overview

Quantity:	100 µL
Target:	MAP9
Reactivity:	Human
Host:	Rabbit
Clonality:	Polyclonal
Conjugate:	This MAP9 antibody is un-conjugated
Application:	Western Blotting (WB), ELISA

Product Details

Immunogen:	Synthesized peptide derived from internal of Human MAP9.
Isotype:	IgG
Cross-Reactivity:	Human
Purification:	The antibody was affinity-purified from rabbit antiserum by affinity-chromatography using epitope-specific immunogen.

Target Details

Target:	MAP9
Alternative Name:	MAP9 ( <a href="#">MAP9 Products</a> )
Background:	Background: Involved in organization of the bipolar mitotic spindle. Required for bipolar spindle assembly, mitosis progression and cytokinesis. May act by stabilizing interphase microtubules.

## Target Details

---

Saffin J.-M., Proc. Natl. Acad. Sci. U.S.A. 102:11302-11307(2005).

Ota T., Nat. Genet. 36:40-45(2004).

Hillier L.W., Nature 434:724-731(2005).

Aliases: ASAP antibody, Aster associated protein antibody, Aster-associated protein antibody,

Map9 antibody, MAP9\_HUMAN antibody, microtubule associated protein 9 antibody,

Microtubule-associated protein 9 antibody

---

UniProt: [Q49MG5](#)

---

## Application Details

---

Application Notes: WB:1:500-1:3000,

---

Restrictions: For Research Use only

---

## Handling

---

Format: Liquid

---

Buffer: Rabbit IgG in phosphate buffered saline (without Mg<sup>2+</sup> and Ca<sup>2+</sup>), pH 7.4, 150 mM NaCl, 0.02 % sodium azide and 50 % glycerol.

---

Preservative: Sodium azide

---

Precaution of Use: This product contains Sodium azide: a POISONOUS AND HAZARDOUS SUBSTANCE which should be handled by trained staff only.

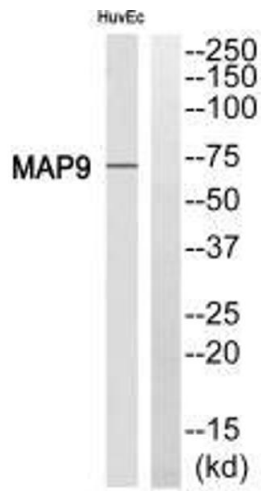
---

Storage: -20 °C,-80 °C

---

Storage Comment: Upon receipt, store at -20°C or -80°C. Avoid repeated freeze.

---



### Western Blotting

**Image 1.** Western blot analysis of extracts from HuvEc cell, using MAP9 antibody.