



[Go to Product page](#)

Datasheet for ABIN7183784

anti-MAST4 antibody

3 Images

Overview

Quantity:	100 µL
Target:	MAST4
Reactivity:	Human
Host:	Rabbit
Clonality:	Polyclonal
Conjugate:	This MAST4 antibody is un-conjugated
Application:	Western Blotting (WB), Immunohistochemistry (IHC), ELISA, Immunofluorescence (IF)

Product Details

Immunogen:	Synthesized peptide derived from internal of Human MAST4.
Isotype:	IgG
Cross-Reactivity:	Human, Mouse
Purification:	The antibody was affinity-purified from rabbit antiserum by affinity-chromatography using epitope-specific immunogen.

Target Details

Target:	MAST4
Alternative Name:	MAST4 (MAST4 Products)
Background:	Background: This gene encodes a member of the microtubule-associated serine/threonine protein kinases. The proteins in this family contain a domain that gives the kinase the ability to determine its own scaffold to control the effects of their kinase activities. Alternative splicing

Target Details

results in multiple transcript variants encoding different isoforms.

Sun L., Mol. Biol. (Mosk.) 40:808-815(2006).

Ota T., Nat. Genet. 36:40-45(2004).

Yu L.-R., J. Proteome Res. 6:4150-4162(2007).

Aliases: MAST4 antibody, MAST4_HUMAN antibody, Microtubule associated serine/threonine protein kinase member 4 antibody, Microtubule-associated serine/threonine-protein kinase 4 antibody

UniProt: [O15021](#)

Application Details

Application Notes: WB:1:500-1:3000, IHC:1:50-1:100, IF:1:100-1:500,

Restrictions: For Research Use only

Handling

Format: Liquid

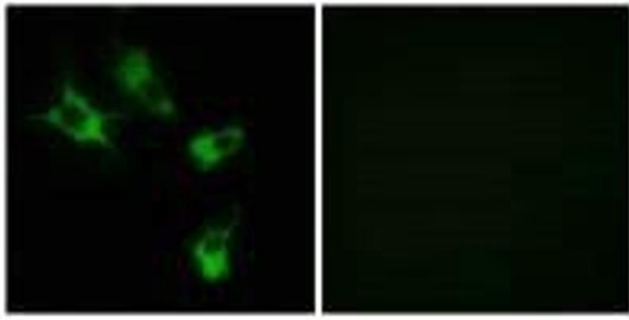
Buffer: Rabbit IgG in phosphate buffered saline (without Mg²⁺ and Ca²⁺), pH 7.4, 150 mM NaCl, 0.02 % sodium azide and 50 % glycerol.

Preservative: Sodium azide

Precaution of Use: This product contains Sodium azide: a POISONOUS AND HAZARDOUS SUBSTANCE which should be handled by trained staff only.

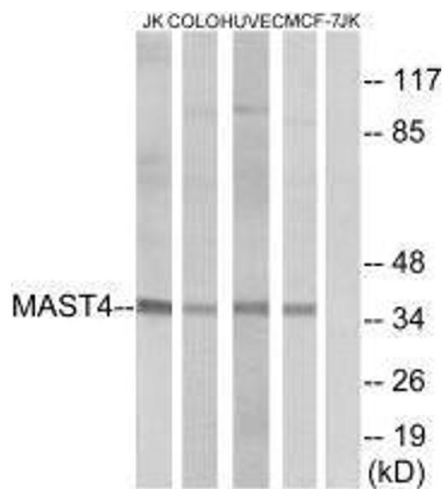
Storage: -20 °C,-80 °C

Storage Comment: Upon receipt, store at -20°C or -80°C. Avoid repeated freeze.



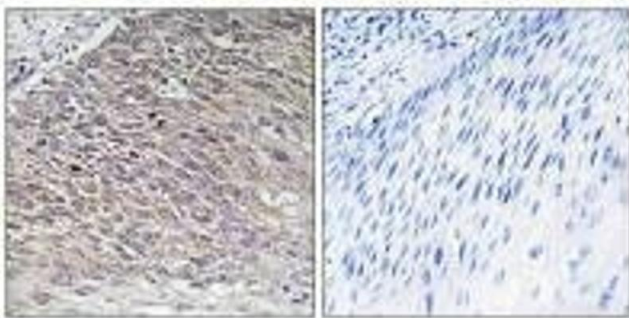
Immunofluorescence

Image 1. Immunofluorescence analysis of COS-7 cells, using MAST4 antibody.



Western Blotting

Image 2. Western blot analysis of extracts from Jurkat cells, COLO cells, HUVEC cells and MCF-7 cells, using MAST4 antibody.



Immunohistochemistry

Image 3. Immunohistochemistry analysis of paraffin-embedded human testis tissue using MAST4 antibody.