



Datasheet for ABIN7183818

anti-MLX antibody



[Go to Product page](#)

1 Image

Overview

Quantity:	100 µL
Target:	MLX
Reactivity:	Human
Host:	Rabbit
Clonality:	Polyclonal
Conjugate:	This MLX antibody is un-conjugated
Application:	Western Blotting (WB), ELISA

Product Details

Immunogen:	Synthesized peptide derived from internal of Human MLx.
Isotype:	IgG
Cross-Reactivity:	Human, Mouse, Rat
Purification:	The antibody was affinity-purified from rabbit antiserum by affinity-chromatography using epitope-specific immunogen.

Target Details

Target:	MLX
Alternative Name:	MLX (MLX Products)
Background:	Background: Transcription regulator. Forms a sequence-specific DNA-binding protein complex with MAD1, MAD4, MNT, WBSCR14 and MLXIP which recognizes the core sequence 5'-CACGTG-3'. The TCFL4-MAD1, TCFL4-MAD4, TCFL4-WBSCR14 complexes are transcriptional

Target Details

repressors. Plays a role in transcriptional activation of glycolytic target genes. Involved in glucose-responsive gene regulation.

Billin A.N., J. Biol. Chem. 274:36344-36350(1999).

Meroni G., Oncogene 19:3266-3277(2000).

Ota T., Nat. Genet. 36:40-45(2004).

Aliases: bHLHd13 antibody, BigMax protein antibody, Class D basic helix-loop-helix protein 13 antibody, MAD7 antibody, Max like bHLHZip protein antibody, Max like protein X antibody, Max-like bHLHZip protein antibody, Max-like protein X antibody, MLX antibody, MLX_HUMAN antibody, MLXIP antibody, MONDOA antibody, MXD7 antibody, Protein BigMax antibody, Protein Mlx antibody, TCFL4 antibody, transcription factor like 4 antibody, Transcription factor like protein 4 antibody, Transcription factor-like protein 4 antibody

UniProt: [Q9UH92](#)

Application Details

Application Notes: WB:1:500-1:3000,

Restrictions: For Research Use only

Handling

Format: Liquid

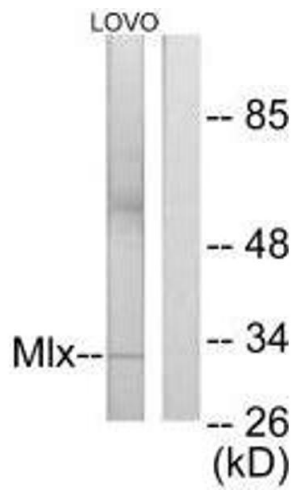
Buffer: Rabbit IgG in phosphate buffered saline (without Mg²⁺ and Ca²⁺), pH 7.4, 150 mM NaCl, 0.02 % sodium azide and 50 % glycerol.

Preservative: Sodium azide

Precaution of Use: This product contains Sodium azide: a POISONOUS AND HAZARDOUS SUBSTANCE which should be handled by trained staff only.

Storage: -20 °C,-80 °C

Storage Comment: Upon receipt, store at -20°C or -80°C. Avoid repeated freeze.



Western Blotting

Image 1. Western blot analysis of extracts from LOVO cells, using Mlx antibody.